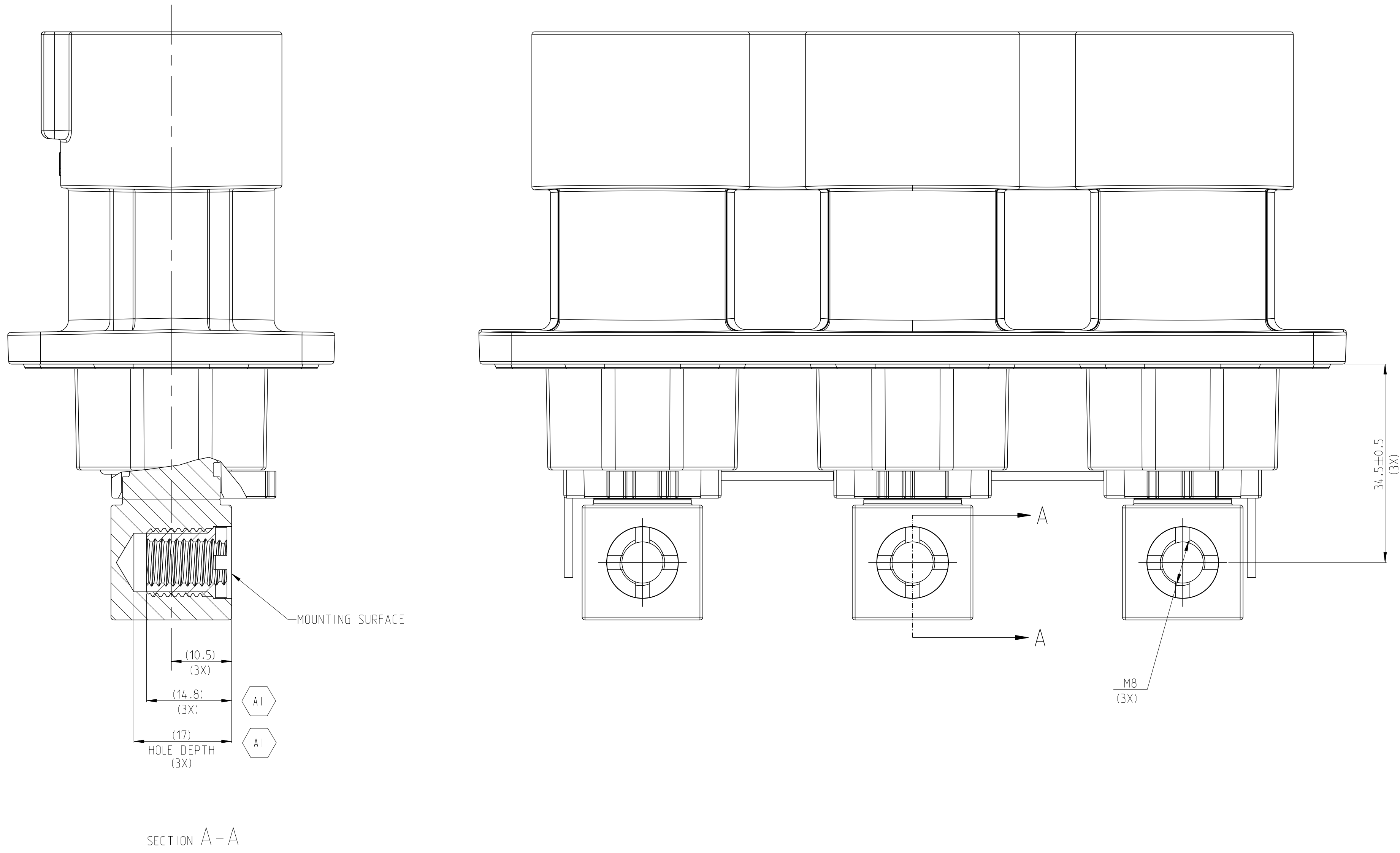
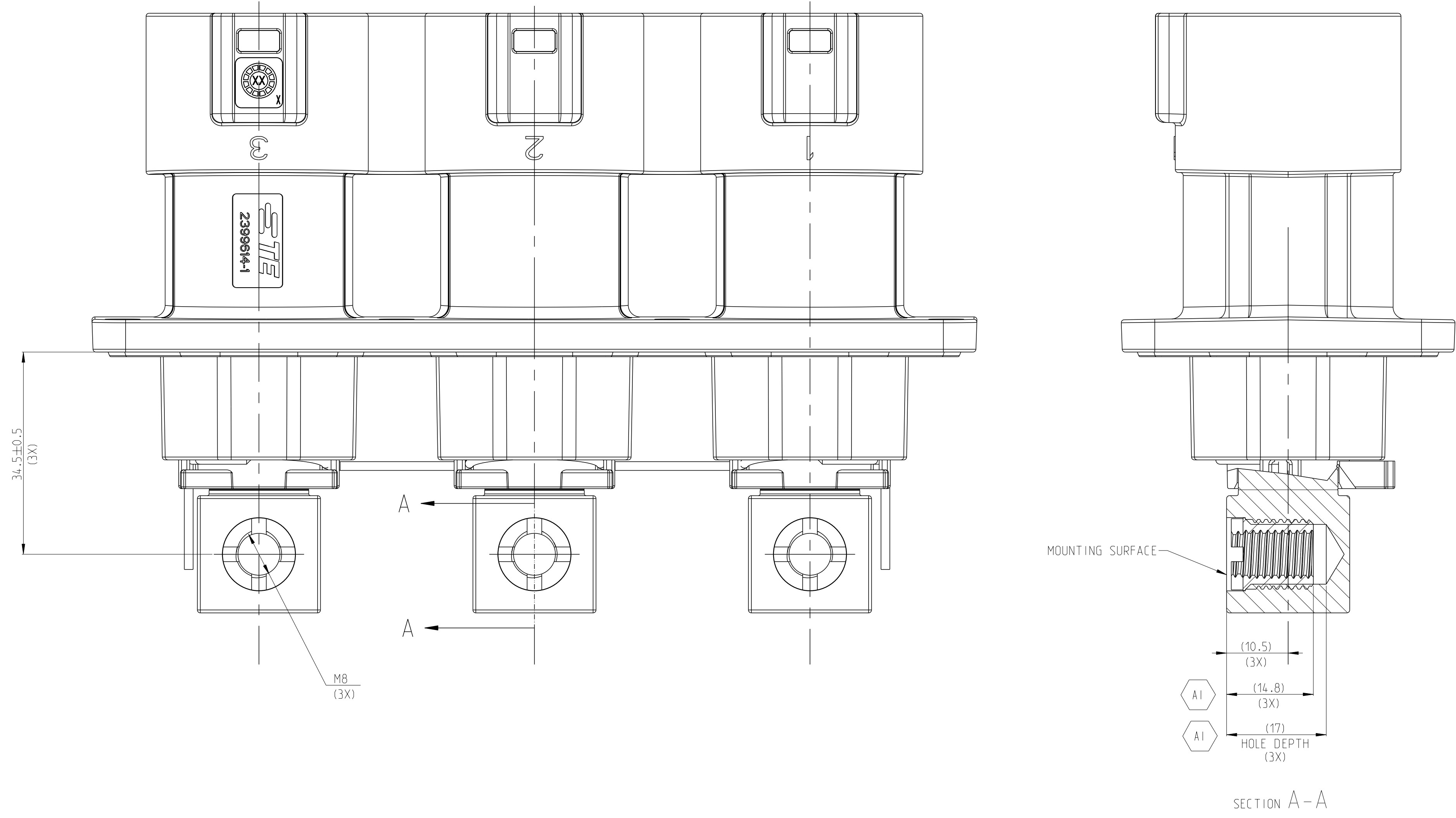


10 INTERFACE PANEL CODE SEE SHEET 4



1.MISSING DIMENSIONS ACC.TO 2-2399608-1

| | | | | | | | | | |
|------------|-------|-----------------------------------|----------------------------|------|----------|---------------|------------|-----|------|
| 2399608-4 | K/L/M | 3POS,PIN DIA 14.0 HDR ASSY,180DEG | CODE HOUSING | M | PA66-GF | AQUA RED | (725) | 1 | 10 |
| | | | CODE HOUSING | L | PA66-GF | AQUA BROWN | | 1 | 9 |
| | | | CODE HOUSING | K | PA66-GF | AQUA GREEN | | 1 | 8 |
| | | | FOLLOW 2399608-1 | - | - | - | | - | 1-7 |
| 2399608-3 | G/H/J | 3POS,PIN DIA 14.0 HDR ASSY,180DEG | CODE HOUSING | J | PA66-GF | ORANGE | (725) | 1 | 10 |
| | | | CODE HOUSING | H | PA66-GF | YELLOW | | 1 | 9 |
| | | | CODE HOUSING | G | PA66-GF | RED | | 1 | 8 |
| | | | FOLLOW 2399608-1 | - | - | - | | - | 1-7 |
| 2399608-2 | D/E/F | 3POS,PIN DIA 14.0 HDR ASSY,180DEG | CODE HOUSING | F | PA66-GF | BROWN | (725) | 1 | 10 |
| | | | CODE HOUSING | E | PA66-GF | GREEN | | 1 | 9 |
| | | | CODE HOUSING | D | PA66-GF | PURPLE | | 1 | 8 |
| | | | FOLLOW 2399608-1 | - | - | - | | - | 1-7 |
| 2399608-1 | A/B/C | 3POS,PIN DIA 14.0 HDR ASSY,180DEG | CODE HOUSING | C | PA66-GF | BLUE | (725) | 1 | 10 |
| | | | CODE HOUSING | B | PA66-GF | NATURE | | 1 | 9 |
| | | | CODE HOUSING | A | PA66-GF | BLACK | | 1 | 8 |
| | | | HV INTERLOCK CABLE,BRIDGED | - | - | - | | 2 | 7 |
| | | | HV INTERLOCK CABLE | - | - | - | | 2 | 6 |
| | | | FACE SEAL | - | SILICION | RED | | 1 | 5 |
| | | | BUSBAR,FRONT SIDE | - | COPPER | Ag PLATED | | 3 | 4 |
| | | | HEADER TPA | - | PA66-GF | RED | | 3 | 3 |
| | | | FINGER PROTECTION CAP | - | PA66-GF | BLACK | | 3 | 2 |
| | | | HEADER HOUSING 180DEG,3POS | - | AL-ALLOY | NICKEL PLATED | | 1 | 1 |
| TE-ASSY-NO | CODE | DESCRIPTION | DESCRIPTION | CODE | MATERIAL | SURFACE COLOR | WEIGHT (g) | QTY | ITEM |



1.MISSING DIMENSIONS ACC.TO 2-2399608-1

| | | | | | | | | | |
|-------------|-------|-----------------------------------|----------------------------|------|----------|---------------|------------|-----|------|
| 1-2399608-4 | K/L/M | 3POS,PIN DIA 14.0 HDR ASSY,180DEG | CODE HOUSING | M | PA66-GF | AQUA RED | (725) | 1 | 10 |
| | | | CODE HOUSING | L | PA66-GF | AQUA BROWN | | 1 | 9 |
| | | | CODE HOUSING | K | PA66-GF | AQUA GREEN | | 1 | 8 |
| | | | FOLLOW 1-2399608-1 | - | - | - | | - | 1-7 |
| 1-2399608-3 | G/H/J | 3POS,PIN DIA 14.0 HDR ASSY,180DEG | CODE HOUSING | J | PA66-GF | ORANGE | (725) | 1 | 10 |
| | | | CODE HOUSING | H | PA66-GF | YELLOW | | 1 | 9 |
| | | | CODE HOUSING | G | PA66-GF | RED | | 1 | 8 |
| | | | FOLLOW 1-2399608-1 | - | - | - | | - | 1-7 |
| 1-2399608-2 | D/E/F | 3POS,PIN DIA 14.0 HDR ASSY,180DEG | CODE HOUSING | F | PA66-GF | BROWN | (725) | 1 | 10 |
| | | | CODE HOUSING | E | PA66-GF | GREEN | | 1 | 9 |
| | | | CODE HOUSING | D | PA66-GF | PURPLE | | 1 | 8 |
| | | | FOLLOW 1-2399608-1 | - | - | - | | - | 1-7 |
| 1-2399608-1 | A/B/C | 3POS,PIN DIA 14.0 HDR ASSY,180DEG | CODE HOUSING | C | PA66-GF | BLUE | (725) | 1 | 10 |
| | | | CODE HOUSING | B | PA66-GF | NATURE | | 1 | 9 |
| | | | CODE HOUSING | A | PA66-GF | BLACK | | 1 | 8 |
| | | | HV INTERLOCK CABLE,BRIDGED | - | - | - | | 2 | 7 |
| | | | HV INTERLOCK CABLE | - | - | - | | 2 | 6 |
| | | | FACE SEAL | - | SILICION | RED | | 1 | 5 |
| | | | BUSBAR,BACK SIDE | - | COPPER | Ag PLATED | | 3 | 4 |
| | | | HEADER TPA | - | PA66-GF | RED | | 3 | 3 |
| | | | FINGER PROTECTION CAP | - | PA66-GF | BLACK | | 3 | 2 |
| | | | HEADER HOUSING 180DEG,3POS | - | AL-ALLOY | NICKEL PLATED | | 1 | 1 |
| TE-ASSY-NO | CODE | DESCRIPTION | DESCRIPTION | CODE | MATERIAL | SURFACE COLOR | WEIGHT (g) | QTY | ITEM |

Mouser Electronics

Authorized Distributor

Click to View Pricing, Inventory, Delivery & Lifecycle Information:

[TE Connectivity:](#)

[1-2399608-1](#) [2-2399608-1](#) [2399608-1](#)