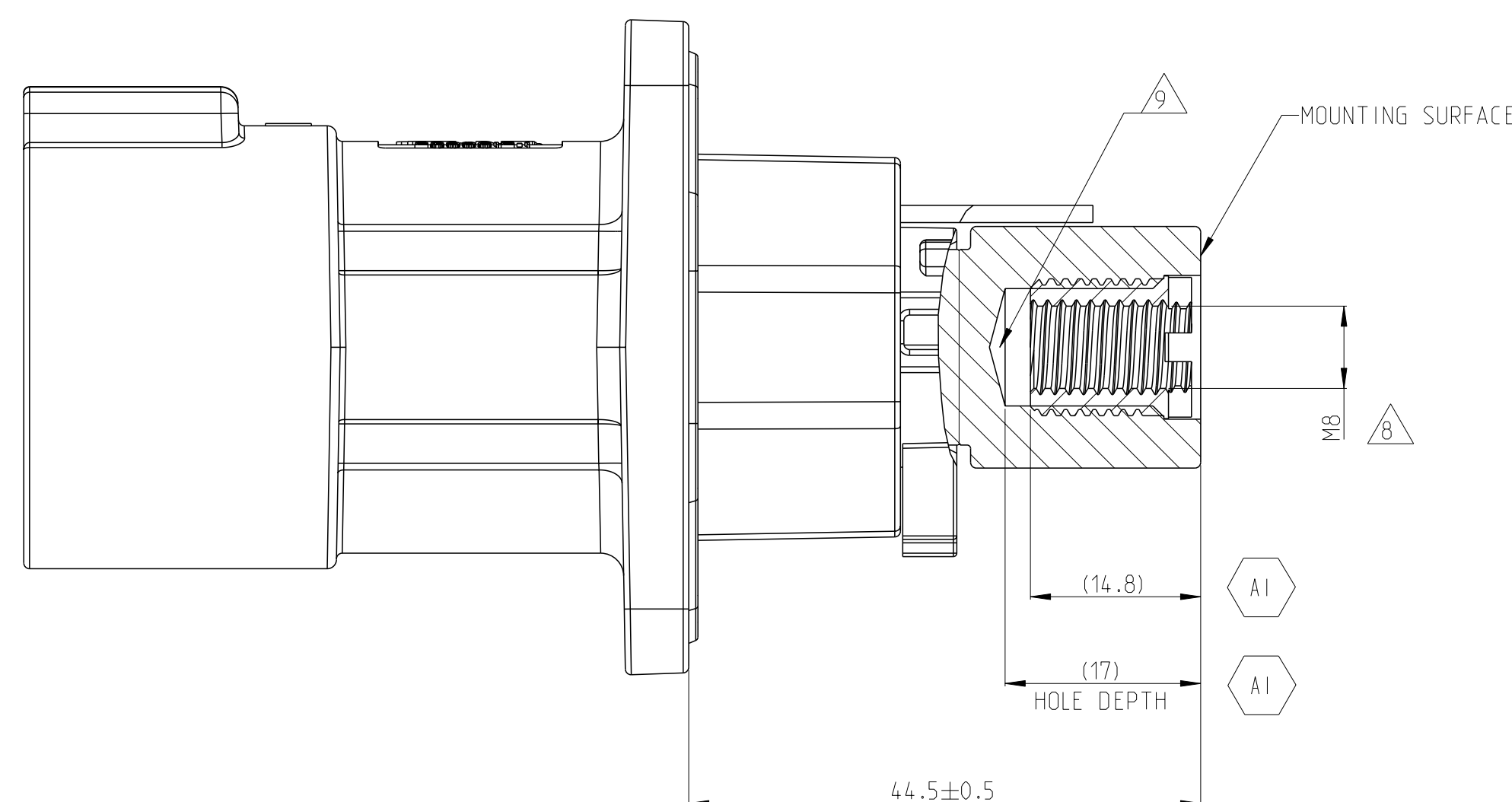
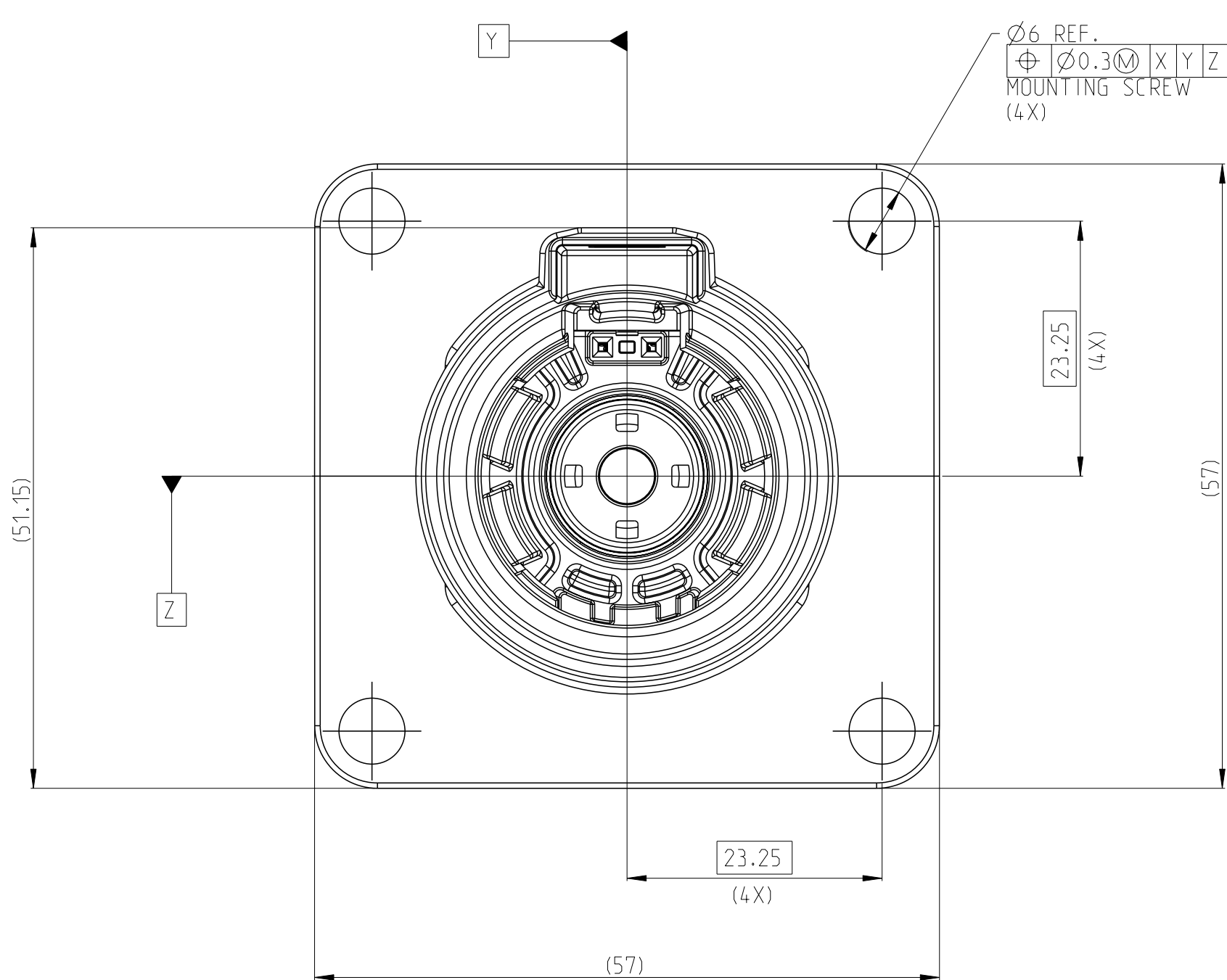
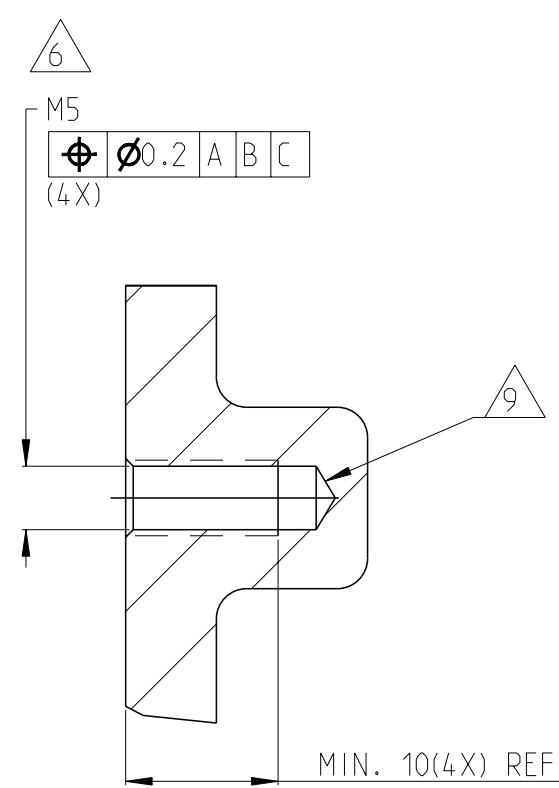
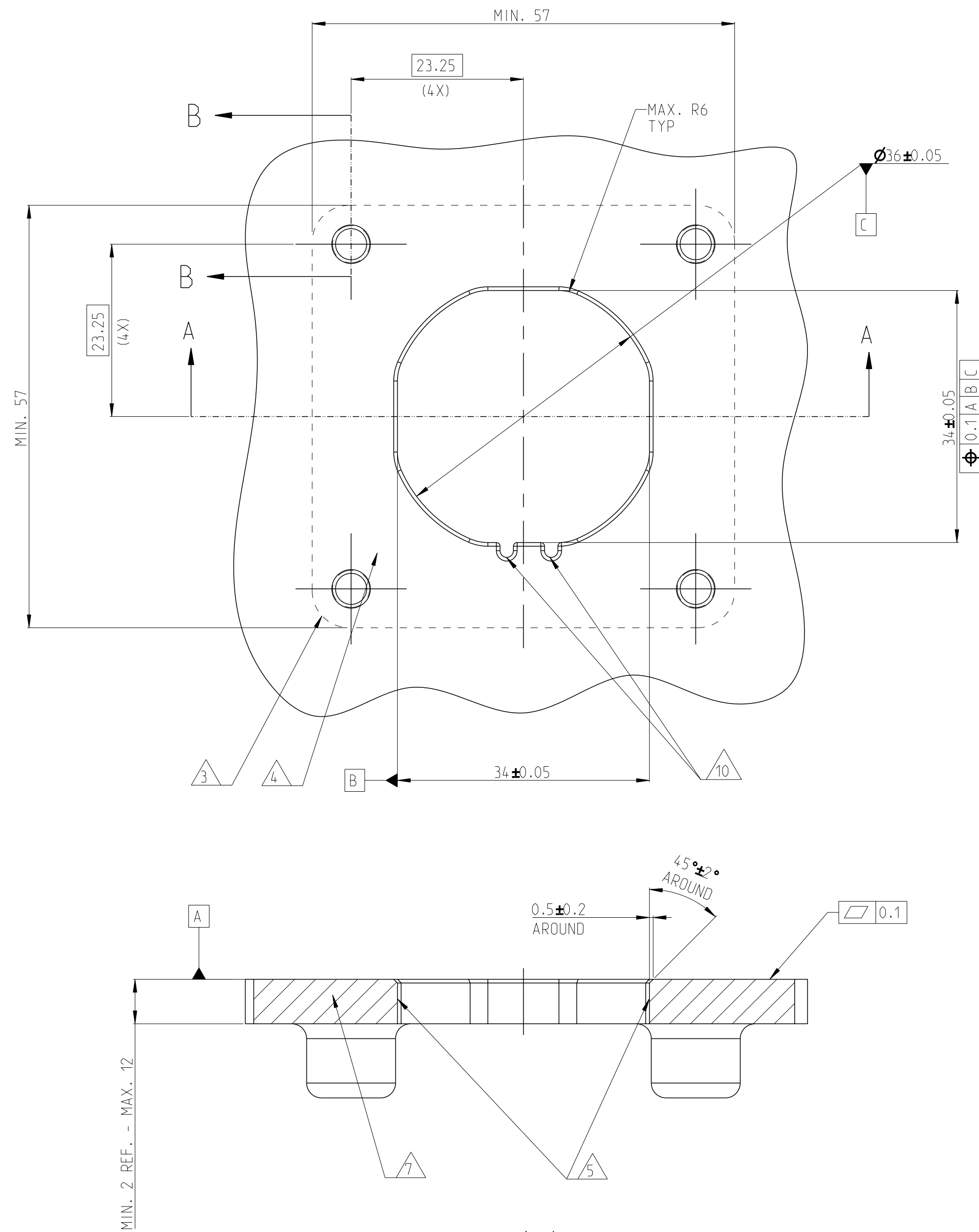
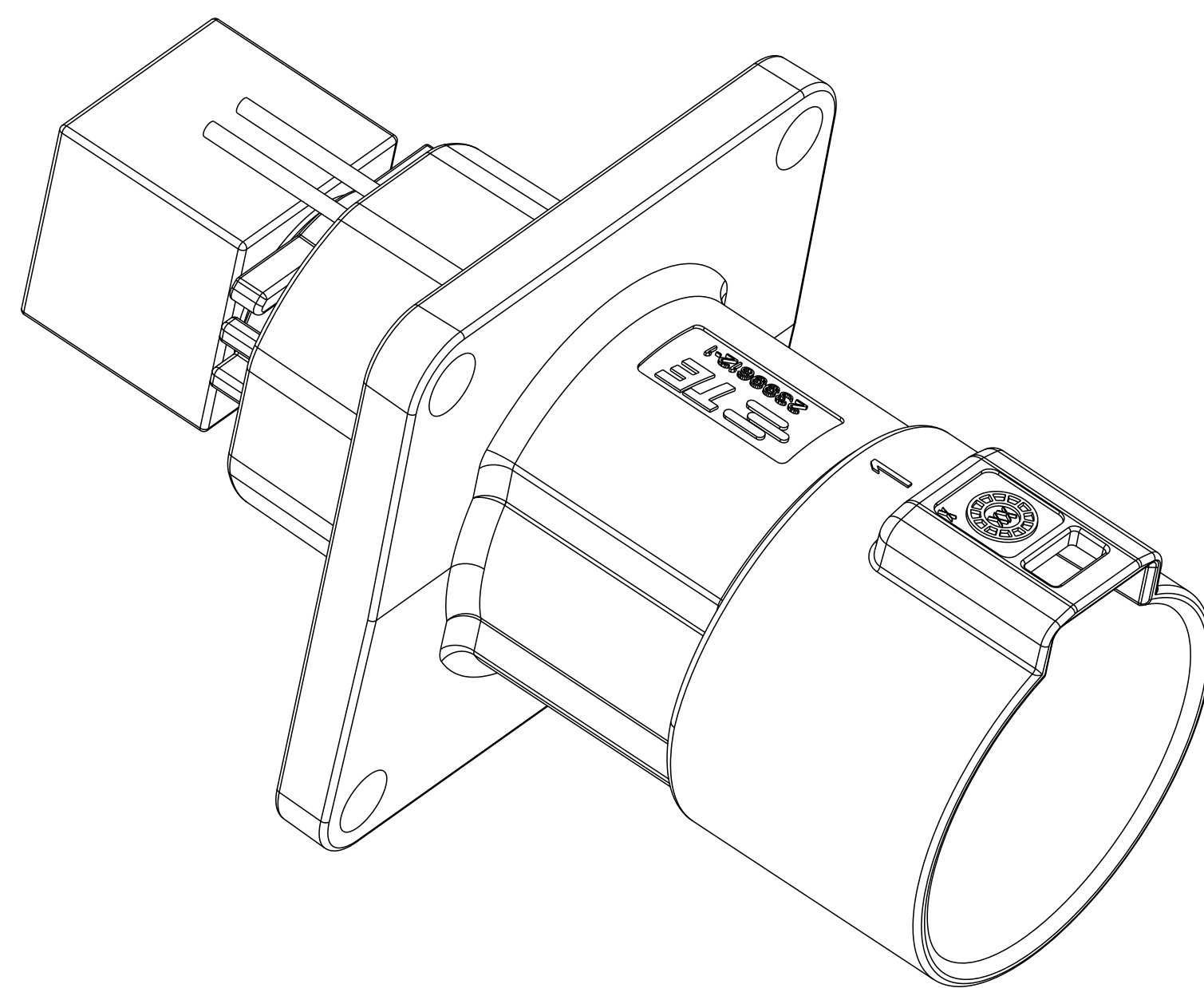
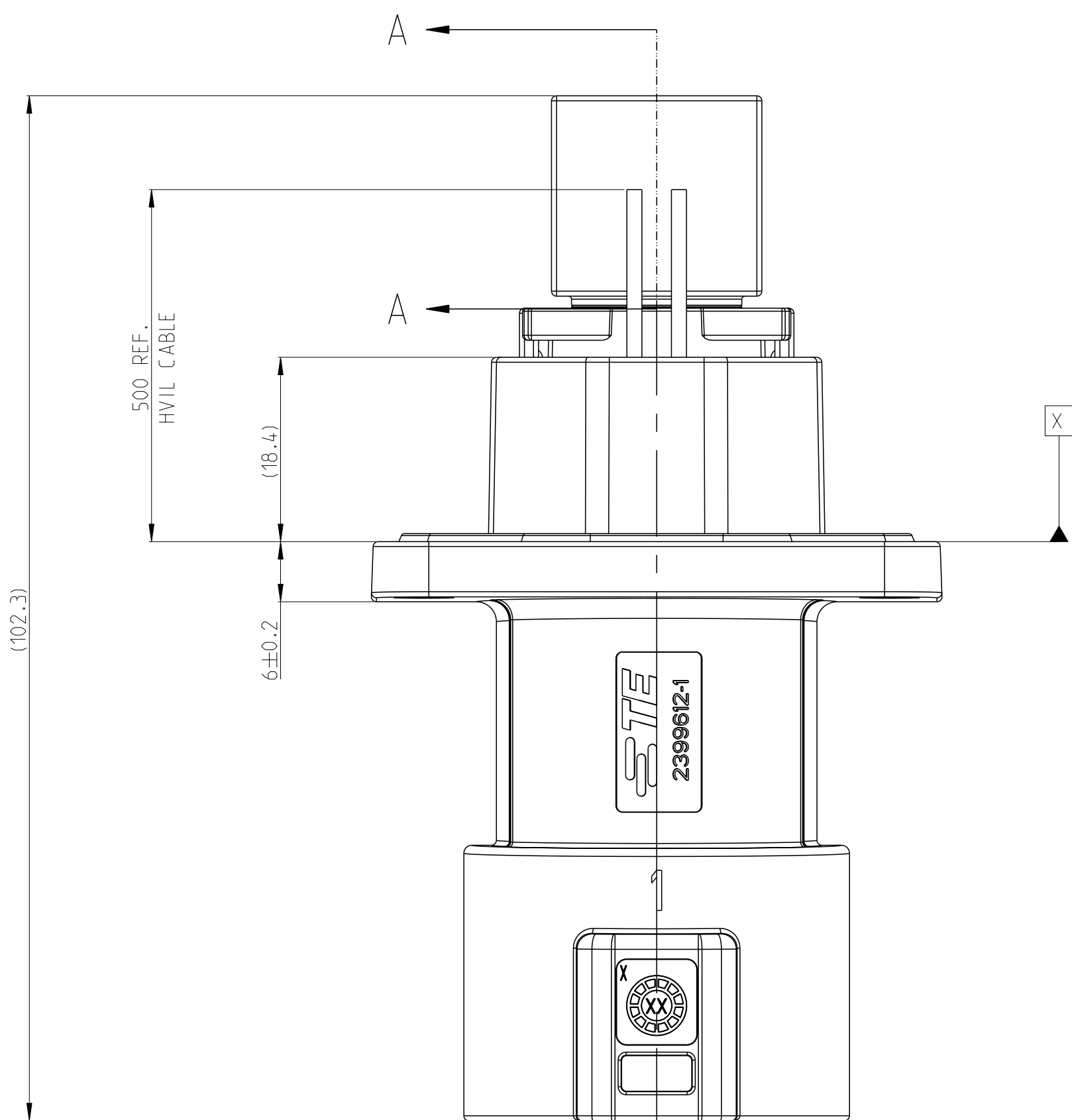
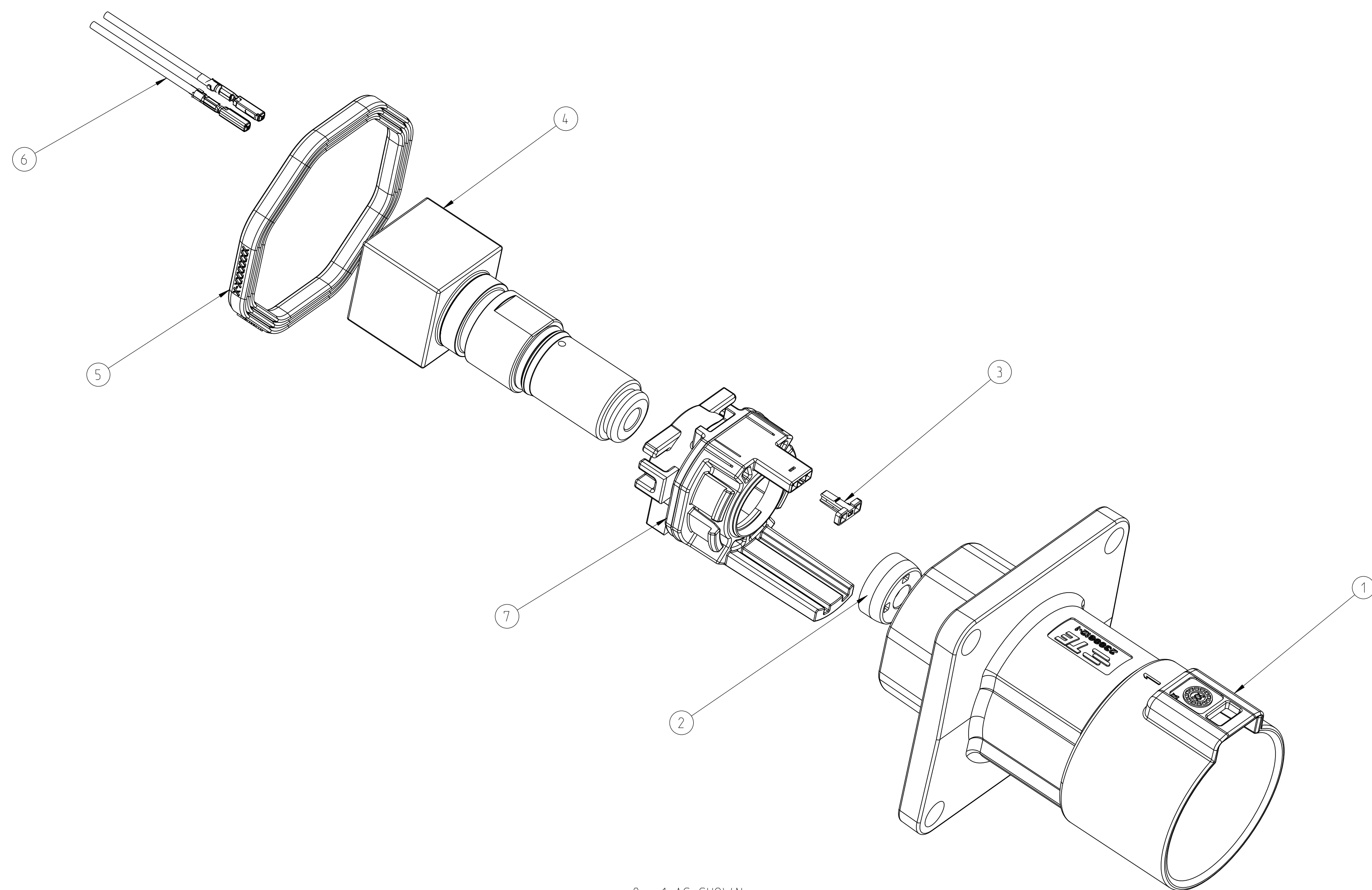


ADAPTER PLATE - HVP-HD1400 1POS HEADER INTERFACE



SECTION A-A

9-2399606-3	M	1POS,PIN DIA 14.0 HDR ASSY,180DEG	CODE HOUSING FOLLOW 8-2399606-1	M	PA66-GF	AQUA RED	(245)	1	7
				-	-	-		-	1-6
9-2399606-2	L	1POS,PIN DIA 14.0 HDR ASSY,180DEG	CODE HOUSING FOLLOW 8-2399606-1	L	PA66-GF	AQUA BROWN	(245)	1	7
				-	-	-		-	1-6
9-2399606-1	K	1POS,PIN DIA 14.0 HDR ASSY,180DEG	CODE HOUSING FOLLOW 8-2399606-1	K	PA66-GF	AQUA GREEN	(245)	1	7
				-	-	-		-	1-6
8-2399606-9	J	1POS,PIN DIA 14.0 HDR ASSY,180DEG	CODE HOUSING FOLLOW 8-2399606-1	J	PA66-GF	ORANGE	(245)	1	7
				-	-	-		-	1-6
8-2399606-8	H	1POS,PIN DIA 14.0 HDR ASSY,180DEG	CODE HOUSING FOLLOW 8-2399606-1	H	PA66-GF	YELLOW	(245)	1	7
				-	-	-		-	1-6
8-2399606-7	G	1POS,PIN DIA 14.0 HDR ASSY,180DEG	CODE HOUSING FOLLOW 8-2399606-1	G	PA66-GF	RED	(245)	1	7
				-	-	-		-	1-6
8-2399606-6	F	1POS,PIN DIA 14.0 HDR ASSY,180DEG	CODE HOUSING FOLLOW 8-2399606-1	F	PA66-GF	BROWN	(245)	1	7
				-	-	-		-	1-6
8-2399606-5	E	1POS,PIN DIA 14.0 HDR ASSY,180DEG	CODE HOUSING FOLLOW 8-2399606-1	E	PA66-GF	GREEN	(245)	1	7
				-	-	-		-	1-6
8-2399606-4	D	1POS,PIN DIA 14.0 HDR ASSY,180DEG	CODE HOUSING FOLLOW 8-2399606-1	D	PA66-GF	PURPLE	(245)	1	7
				-	-	-		-	1-6
8-2399606-3	C	1POS,PIN DIA 14.0 HDR ASSY,180DEG	CODE HOUSING FOLLOW 8-2399606-1	C	PA66-GF	BLUE	(245)	1	7
				-	-	-		-	1-6
8-2399606-2	B	1POS,PIN DIA 14.0 HDR ASSY,180DEG	CODE HOUSING FOLLOW 8-2399606-1	B	PA66-GF	NATURE	(245)	1	7
				-	-	-		-	1-6
8-2399606-1	A	1POS,PIN DIA 14.0 HDR ASSY,180DEG	CODE HOUSING HV INTERLOCK CABLE FACE SEAL BUSBAR, TOP SIDE HEADER TPA FINGER PROTECTION CAP HEADER HOUSING 180DEG,1POS	A	PA66-GF	BLACK SILICONE - - PA66-GF PA66-GF AL-ALLOY	RED RED RED BLACK NICKEL PLATED	(245)	1 2 1 1 1 1 1
TE-ASSY-NO	CODE	DESCRIPTION	DESCRIPTION	CODE	MATERIAL	SURFACE COLOR	WEIGHT (g)	QTY	ITEM



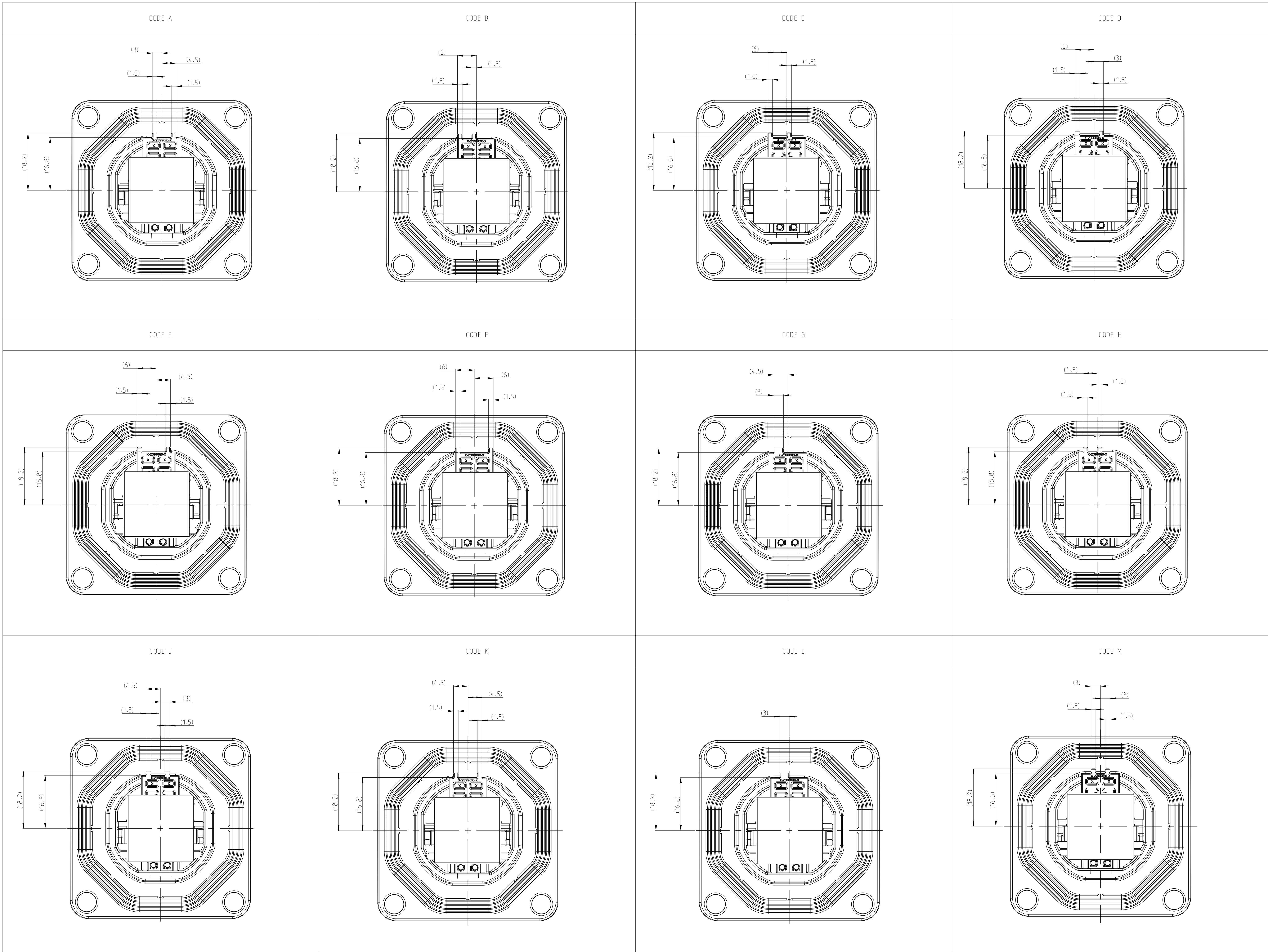
8-x-1 AS SHOWN

1. MATING CONNECTOR REFER TO DRAWING 2400957
2. CODING VARIANT
3. FREE SPACE FOR HEADER
4. SEALING AREA AND BURR TOOL PARTING SHRINKAGE. CAVITIES AND GATE MARKS PERMITTED. SURFACE ROUGHNESS Ra=1.6
5. DRAFT ANGLE UP TO 0.5° PERMITTED
6. MOUNTING SCREW MS. SCREW TYPE UP TO MANUFACTURER, DRILL HOLE DESIGN ACCORDING TO SCREW TYPE
7. MATERIAL: CORROSION RESISTANT, ELEC. TRO CONDUCTIVE
8. SCREW M8 FOR BUSBAR CONNECTION
9. ALL THREAD HOLES ARE BLIND HOLES
10. INTERFACE PANEL CODE SEE SHEET 5

[illegible]

REVISIONS				
P	LV	DESCRIPTION	DATE	BY
-	-	SEE SHEET 1	-	-

2



THIS DRAWING IS A CONTROLLED DOCUMENT.

DIMENSIONS:
IN MM

MATERIAL
SEE TABLE

UNLESS OTHERWISE SPECIFIED:
DIMENSIONS
TOLERANCES
FINISHES

2 DEC

2 DEC

2 DEC

2 DEC

±0.5

±0.1

±0.001

±0.001

2 DEC

2 DEC

2 DEC

2 DEC

2 DEC

2 DEC

2 DEC

2 DEC

DATE
29DEC2021

CHK
29DEC2021

APPV
29DEC2021

PRODUCT SPEC
108-160407

APPLICATION SPEC
114-160222

WEIGHT
SEE TABLE

CUSTOMER DRAWING

DATE
29DEC2021

CHK
29DEC2021

APPV
29DEC2021

NAME
1POS.PIN DIA 14.0.HDR ASSY.180DEG
HVP-HD1400

SIZE
A0

CASE CODE
00779

DRAWING NO
C=2399606

RESTRICTED TO
-

SCALE
2:1

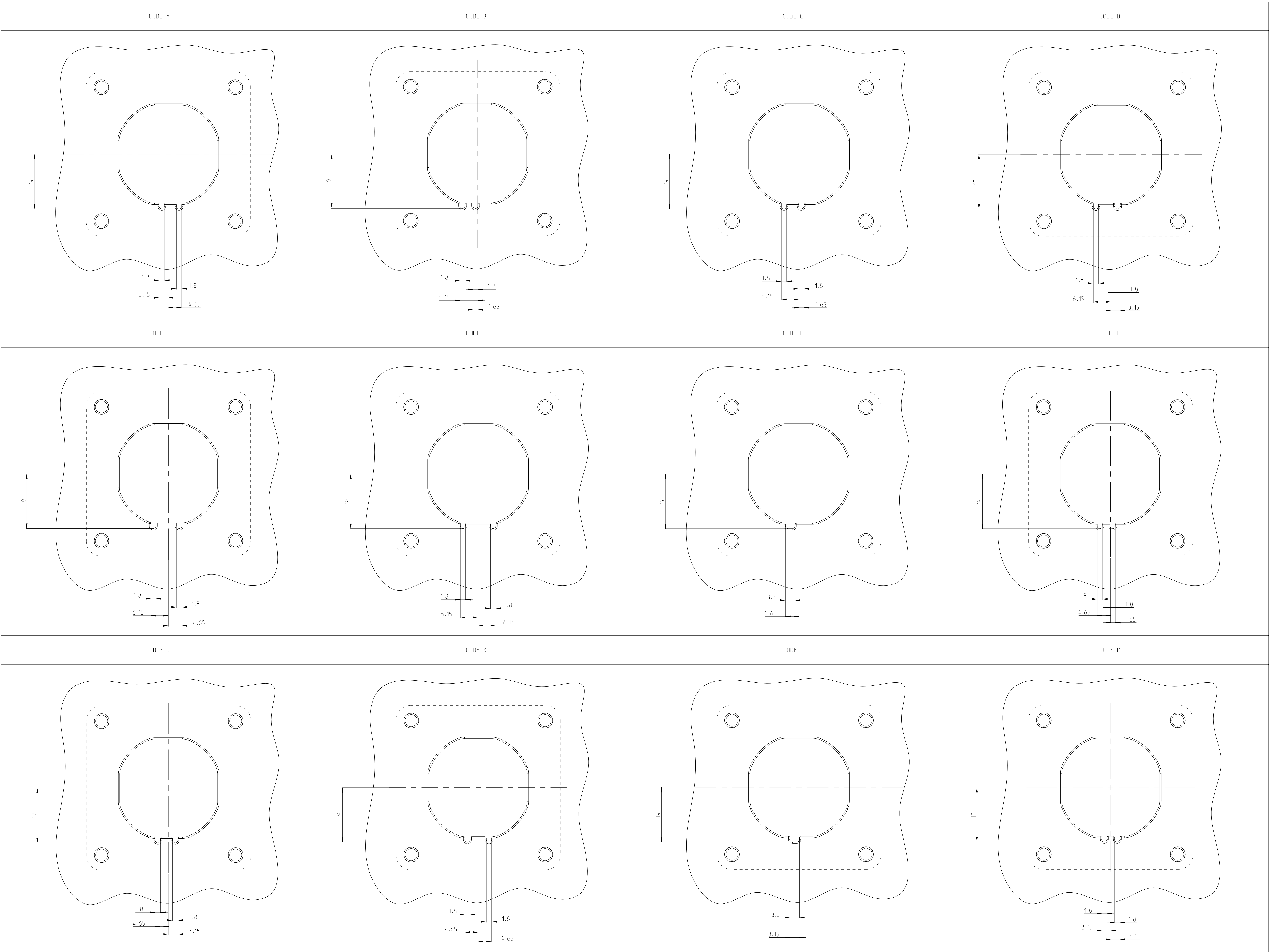
SHEET
4

OF
5

REV
A1

4896 (3/13)

REVISIONS				
P.	LV.	DESCRIPTION	DATE	BY
-	-	SEE SHEET 1	-	-



THIS DRAWING IS A CONTROLLED DOCUMENT.		DRN S.TAN	29DEC2021
DIMENSIONS UNLESS OTHERWISE SPECIFIED.		CHK J.L.L.	29DEC2021
APPROVED		APPV J.VIN	29DEC2021
PRODUCT SPEC		NAME	
APPLICATION SPEC		1POS.PIN DIA 14.0.HDR ASSY.180DEG	
MATERIAL		HVP-HD1400	
SEE TABLE		SIZE	CASE CODE
H11SH_SPEC-2		A0	00779
CUSTOMER DRAWING		SCALE	2:1
		SHEET	5
		OF	5
		REV	A1



Mouser Electronics

Authorized Distributor

Click to View Pricing, Inventory, Delivery & Lifecycle Information:

[TE Connectivity:](#)

[2399606-1](#) [2399606-2](#) [2399606-3](#) [4-2399606-1](#) [4-2399606-2](#) [4-2399606-3](#) [8-2399606-1](#) [8-2399606-2](#) [8-2399606-](#)
[3](#)