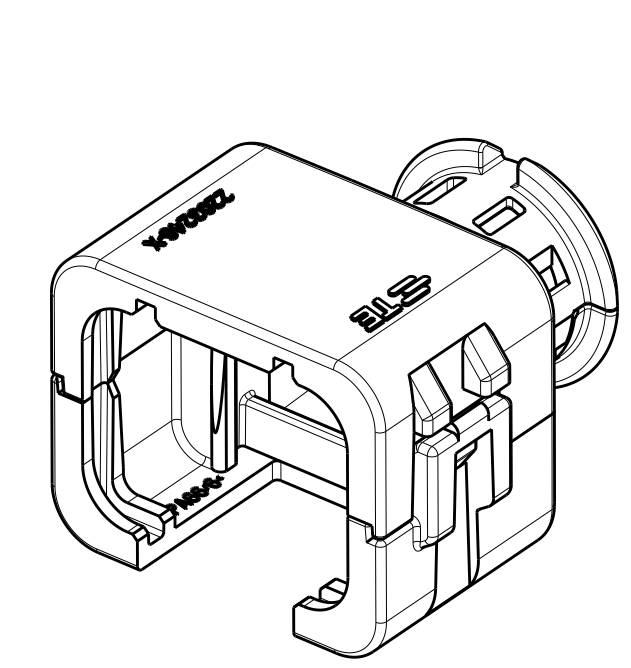
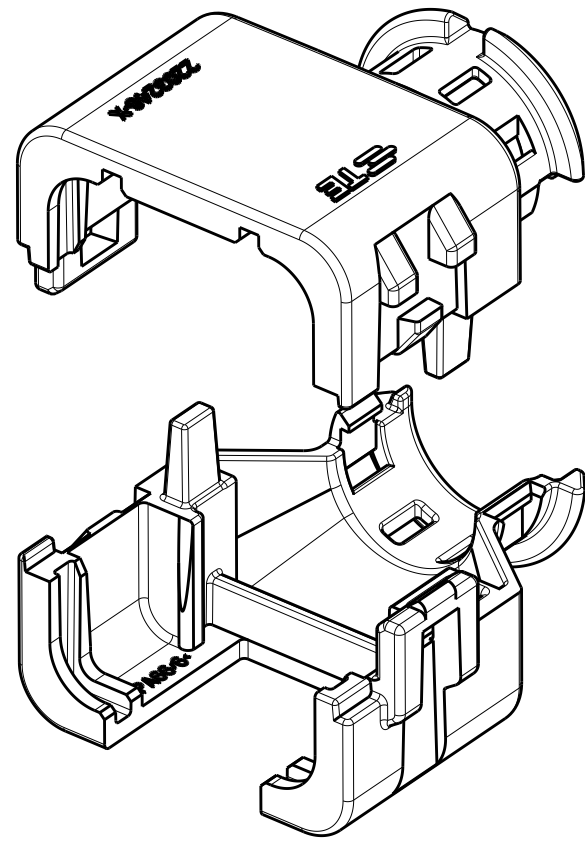


D

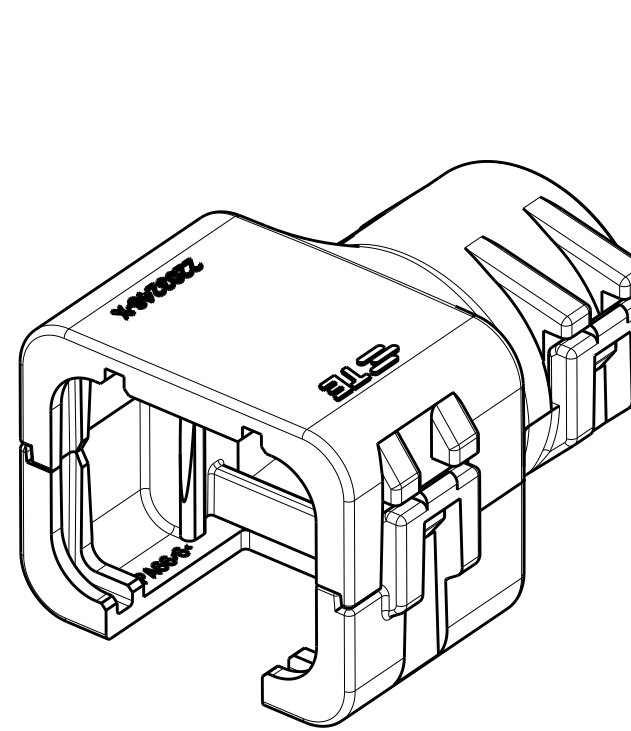


2292800-1
ASSEMBLED ISOMETRIC VIEW SHOWN

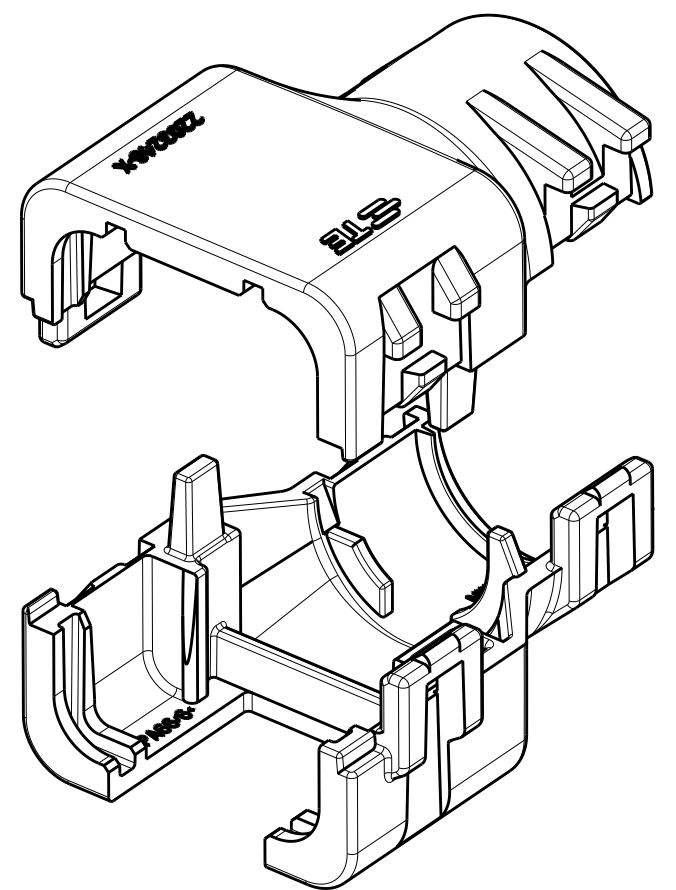


2292800-1
EXPLODED ISOMETRIC VIEW SHOWN

C

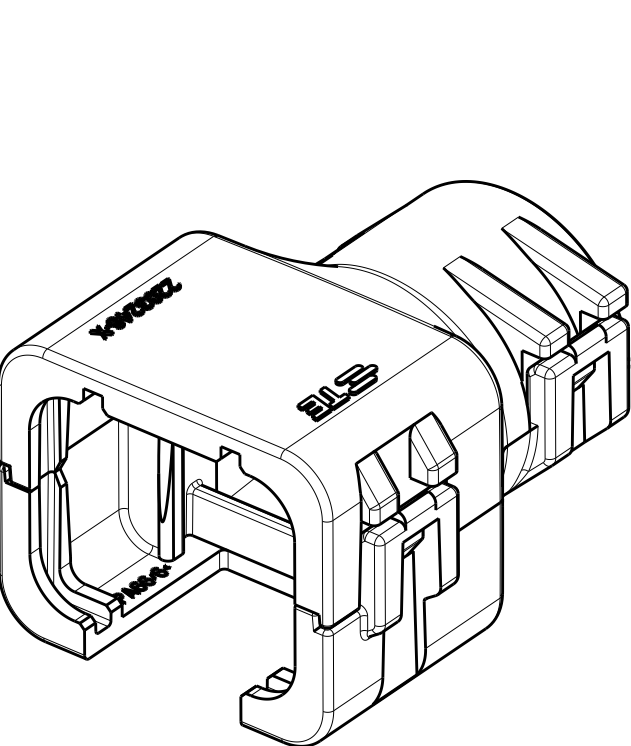


2292800-2
ASSEMBLED ISOMETRIC VIEW SHOWN

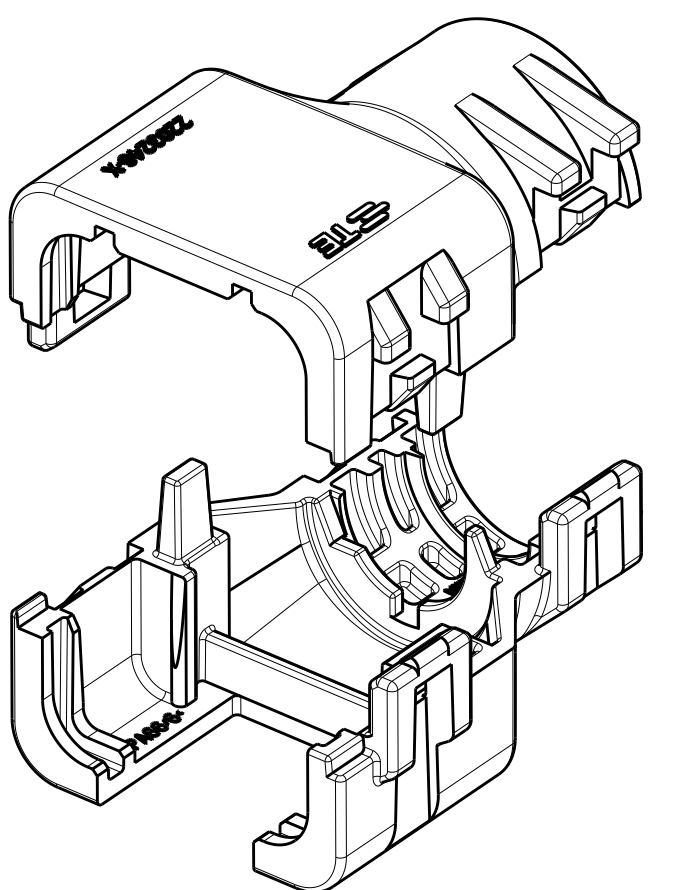


2292800-2
EXPLODED ISOMETRIC VIEW SHOWN

B

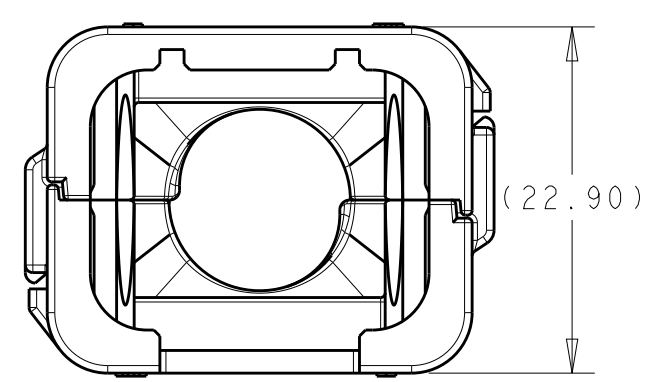
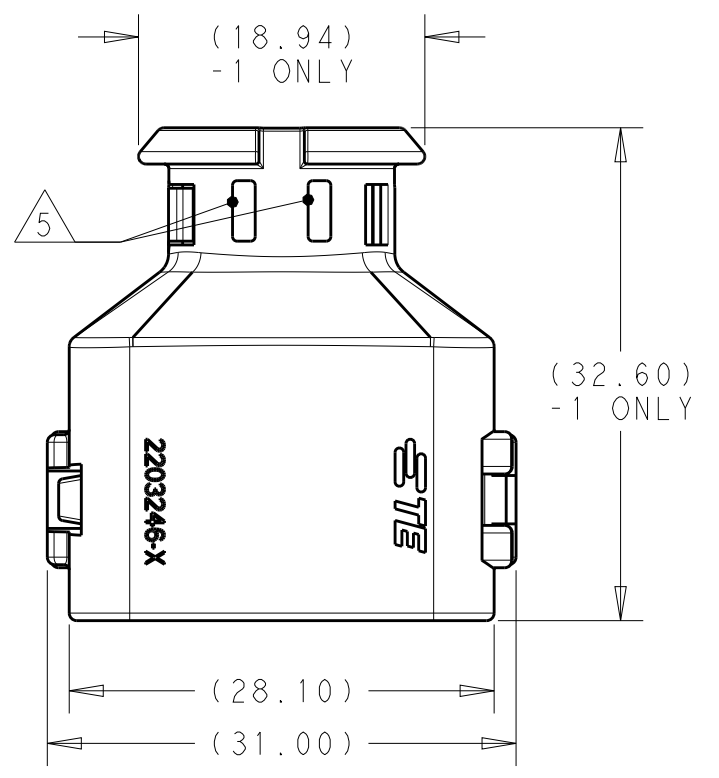


2292800-3
ASSEMBLED ISOMETRIC VIEW SHOWN



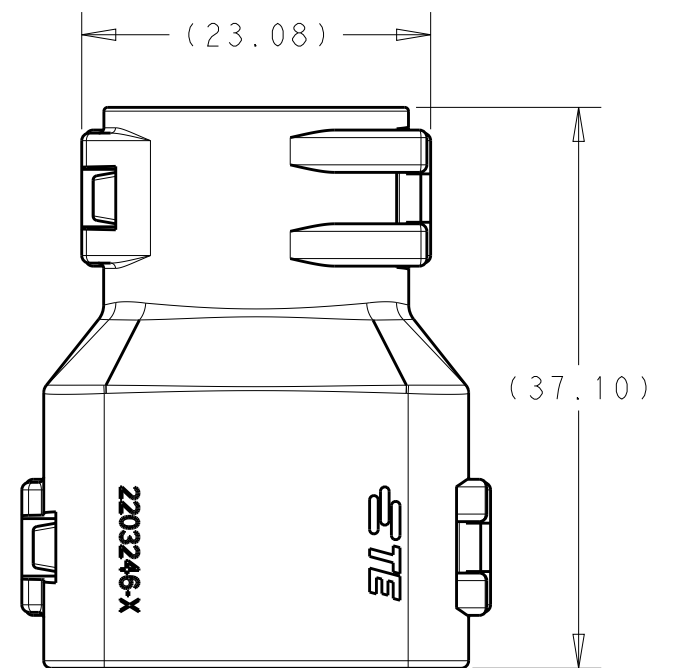
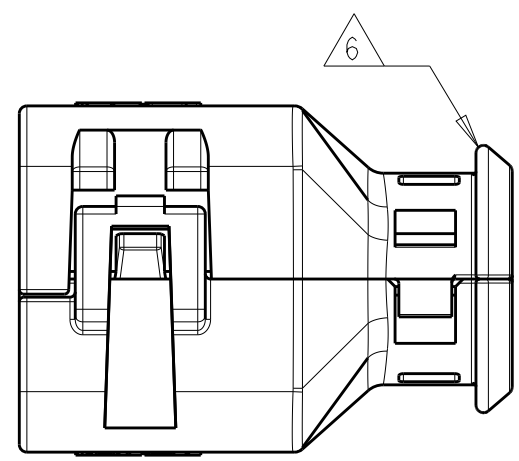
2292800-3
EXPLODED ISOMETRIC VIEW SHOWN

A



2292800-1
ASSEMBLED VIEW SHOWN

DIMENSIONS SHOWN TYPICAL FOR ALL PART NUMBERS
EXCEPT AS NOTED



2292800-2
ASSEMBLED VIEW SHOWN

DIMENSIONS SHOWN TYPICAL FOR -2 AND -3 ONLY



REVISIONS					
P	LTR	DESCRIPTION	DATE	DWN	APVD
	A	RELEASED PER ECO-15-010501	17JUL2015	JM	RB
	A1	REV PER ECO-16-008350	02JUN2016	JM	RB
	A2	REV PER ECO-16-013256	08SEP2016	JM	RB

- MATERIAL: NYLON MOLDING COMPOUND, BLACK, PA66/6.
- BACKSHELL DESIGNED SUCH THAT TWO HALVES ATTACH TO ONE ANOTHER AND CLAMP AROUND THE CONNECTOR COVER.
- DIMENSIONS TO BE MEASURED WHEN BACKSHELLS ASSEMBLED.
- PRODUCT WEIGHTS:
2292800-1: 5.00g ASSEMBLED
2292800-2: 6.37g ASSEMBLED
2292800-3: 6.95g ASSEMBLED
- 4mm WIDE SLOTS FOR TIE WRAP TO SECURE HARNESS WIRES (-1 ONLY).
- HEAT SHRINK TUBING RETENTION FEATURE (-1 ONLY).
7. INSTRUCTION SHEET: 408-151043.
8. CONDUIT PROFILE: NORMAL ONLY

D

C

B

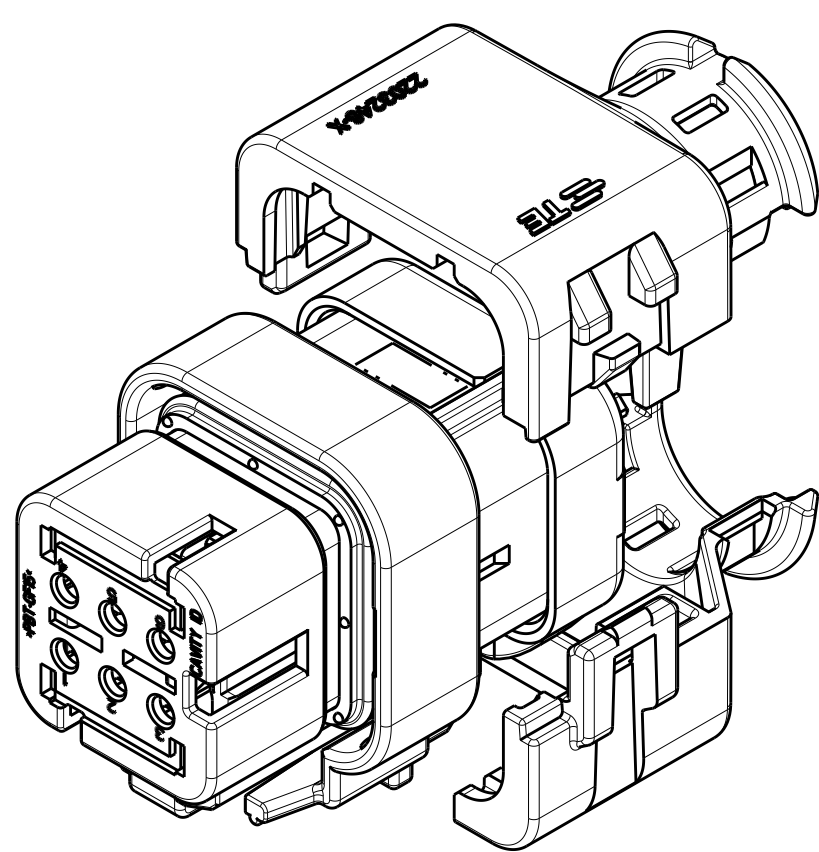
A

776433-X 776531-X	NC12	NW10	2292800-3
	NC16	NW13	2292800-2
	SMOOTH	SMOOTH	2292800-1
FITS ON PLUG ASSY	CORREGATE NC	CORREGATE NW	PART NUMBER
CONDUIT SIZE			

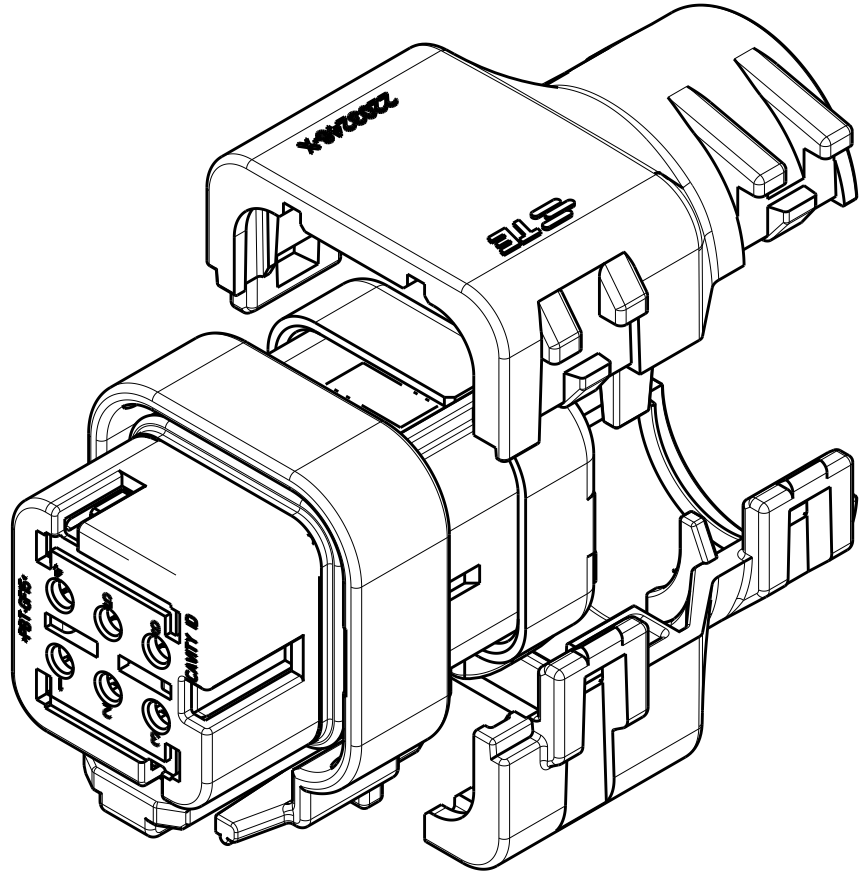
THIS DRAWING IS A CONTROLLED DOCUMENT.		DWN J. MCNEAL 07MAY2015	TE Connectivity		
DIMENSIONS: mm[INCHES]		CHK R. BALTER 07MAY2015			
	TOLERANCES UNLESS OTHERWISE SPECIFIED:		NAME BACKSHELL KIT, 6 POSITION PLUG ASSY, AMPSEAL 16		
	0 PLC ± 1 PLC ± 2 PLC ± 3 PLC ± 4 PLC ± ANGLES ± FINISH -		APVD R. BALTER 07MAY2015		
	MATERIAL -		PRODUCT SPEC 108-151043		
CUSTOMER DRAWING		WEIGHT -	SIZE A2	CAGE CODE 00779	DRAWING NO C-2292800
		SCALE 2:1	SHEET 1	OF 2	REV A2

THIS DRAWING IS UNPUBLISHED.		RELEASED FOR PUBLICATION	20
© COPYRIGHT 20	BY -	ALL RIGHTS RESERVED.	

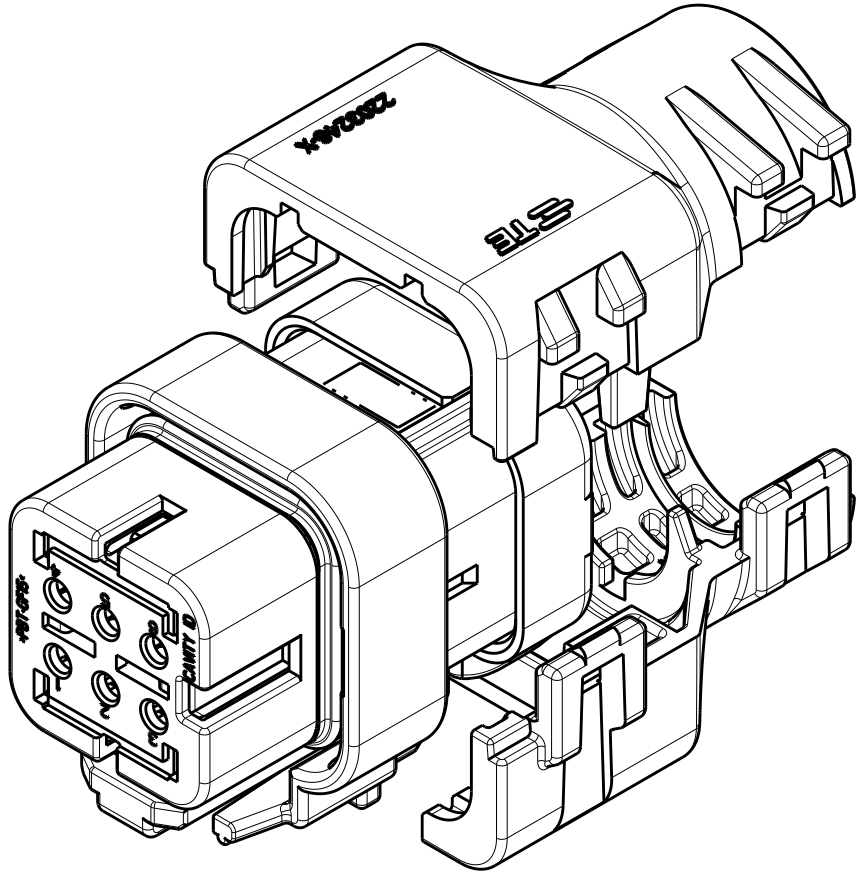
REVISIONS					
P	LTR	DESCRIPTION	DATE	DWN	APVD
	-	SEE SHEET 1	-	-	-



2292800-1
WITH PLUG ASSEMBLY
EXPLODED ISOMETRIC VIEW SHOWN



2292800-2
WITH PLUG ASSEMBLY
EXPLODED ISOMETRIC VIEW SHOWN



2292800-3
WITH PLUG ASSEMBLY
EXPLODED ISOMETRIC VIEW SHOWN



THIS DRAWING IS A CONTROLLED DOCUMENT.		DWN J. MCNEAL 07MAY2015	TE Connectivity		
DIMENSIONS: mm[INCHES]		CHK R. BALTER 07MAY2015			
		APVD R. BALTER 07MAY2015	NAME BACKSHELL KIT, 6 POSITION PLUG ASSY, AMPSEAL 16		
		PRODUCT SPEC 108-151043	RESTRICTED TO		
TOLERANCES UNLESS OTHERWISE SPECIFIED:		APPLICATION SPEC -	SIZE A2	CAGE CODE 00779	DRAWING NO C-2292800
MATERIAL -		WEIGHT -	SCALE 2:1		
FINISH -		CUSTOMER DRAWING	SHEET 2	OF 2	REV A2

Mouser Electronics

Authorized Distributor

Click to View Pricing, Inventory, Delivery & Lifecycle Information:

[TE Connectivity:](#)

[2292800-1](#)