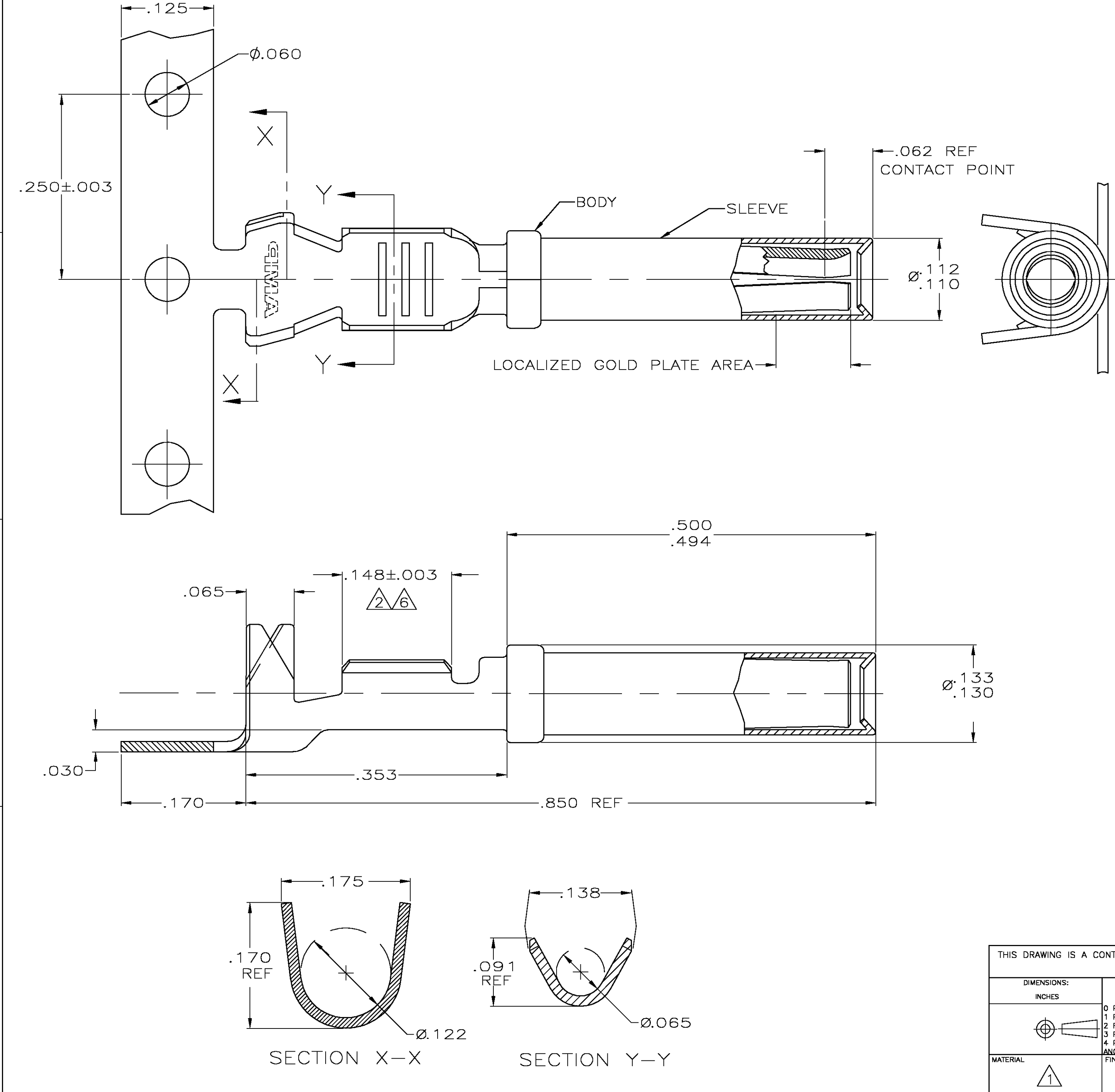


THIS DRAWING IS UNPUBLISHED.

RELEASED FOR PUBLICATION

© COPYRIGHT BY TYCO ELECTRONICS CORPORATION. ALL RIGHTS RESERVED.

LOC	DIST	REVISIONS					
		P	LTR	DESCRIPTION	DATE	DWN	APVD
GE	00		0	REV PER EC 0K40-0124-04	03JUN2004	AH	MPT



- 1 MATERIAL:
BODY: .014 THK. COPPER ALLOY.
SLEEVE: .007 THK. STAINLESS STEEL.
- 2 FINISH:
BODY: .000030 MIN SELECT GOLD IN LOCALIZED GOLD PLATE AREA, AND .000100-.000200 TIN IN LOCALIZED TIN PLATE AREA.
ALL OVER: .000040-.000080 THK. NICKEL.
SLEEVE: PASSIVATE PER 112-230-2, METHOD 1.
3. CONTACT TO BE LUBED WITH LUBRICANT PER AMP P/N 22014-4.
4. WIRE RANGE: 20-18 AWG WITH INSULATION DIAMETERS OF .089 - .131 INCHES.
5. SLEEVE MUST WITHSTAND PULL OFF FORCE IN DIRECTION PARALLEL TO CENTER OF TERMINAL OF 10 LBS MINIMUM.
- 6 MATERIAL:
BODY: .000100 - .000200 TIN IN LOCALIZED TIN PLATE AREA.
ALL OVER: .000040 - .000080 THK NICKEL.
SLEEVE: PASSIVATE PER 112-230-2, METHOD 1.

<div><div>6</div></div>		776493-2	
<div><div>2</div></div>		776493-1	
FINISH		PART NUMBER	
<div><div><div><div>tyco</div><div>Electronics</div></div></div><div><div>Tyco Electronics Corporation</div><div>Harrisburg, PA 17105-3608</div></div></div>			
NAME			
ASSEMBLY, SOCKET			
SIZE	CAGE CODE	DRAWING NO	RESTRICTED TO
A2	00779	C-776493	—
		SCALE 10:1	SHEET 1 OF 1
			REV 0

Mouser Electronics

Authorized Distributor

Click to View Pricing, Inventory, Delivery & Lifecycle Information:

[TE Connectivity:](#)

[776493-2](#) [776493-2 \(Mouser Reel\)](#) [776493-2 \(Cut Strip\)](#)