

| REVISIONS |     |                          |           |          |
|-----------|-----|--------------------------|-----------|----------|
| P         | LTN | DESCRIPTION              | DATE      | OWN APVD |
| A         |     | INITIAL RELEASE          | 21MAY20   | Y.Y. I.Y |
| B         |     | REVISION (ECR-20-008843) | 27OCT20   | Z.C I.Y  |
| B1        |     | REVISION (ECR-21-005772) | 31MAR21   | Z.C I.Y  |
| B2        |     | REVISION (ECR-21-107908) | 20JUL2021 | Z.C I.Y  |

| P/N       | REFERENCE VIEW OF CODINGS, 3POS<br>2:1 |
|-----------|--|
| 2371035-1 |  |
| 2371035-2 |  |
| 2371035-3 |  |
| 2371035-4 | CONTACT TE FOR FURTHER INFO.           |
| 2371035-5 |  |
| 2371035-6 |  |

| P/N         | REFERENCE VIEW OF CODINGS, 2POS<br>2:1 |
|-------------|--|
| 1-2371035-1 |  |
| 1-2371035-2 |  |
| 1-2371035-3 |  |
| 1-2371035-4 | CONTACT TE FOR FURTHER INFO.           |
| 1-2371035-5 |  |
| 1-2371035-6 |  |

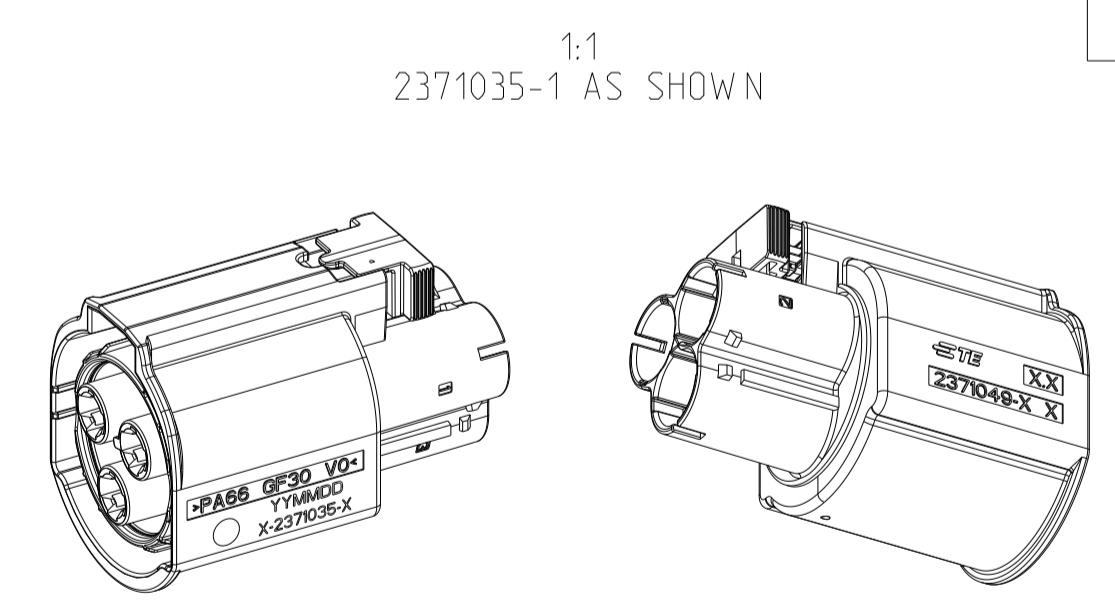
NOTE:  
 1. PRODUCTION DATE (YYMMDD)  
 2. ASSEMBLY P/N MARKING  
 3. TPA AND CPA ARE AT PRE-LOCK POSITION  
 4. COUNTERPART INFO:  
 1). HEADER X-2371113-X  
 2). OTHER SEE TABLE:

| USED CABLE            | 2.5mm <sup>2</sup>  | 4.0mm <sup>2</sup>    | 6mm <sup>2</sup> |
|-----------------------|---|-----------------------|------------------|
| QUALIFIED CABLE BRAND | KBE (SINGLE CORE, SCREENED, COPPER). OTHER WIRE SHALL CONTACT TE FOR FURTHER INFO |                       |                  |
| SOCKET CONTACT        | 2349177-1 (Ag)  | 1-2349177-1 (Ag+AgSn) | 2349177-2 (Ag)   |
| INNER FERRULE         | 2371242-1   | 2371242-2             | 2371242-3        |
| OUTER FERRULE         | 2371243-1   |                       |                  |
| SINGLE WIRE SEAL      | 2371244-1   | 2371244-2             | 2371244-3        |
| WIRE CLIP             | 2371245-1   | 2371245-2             | 2371245-3        |

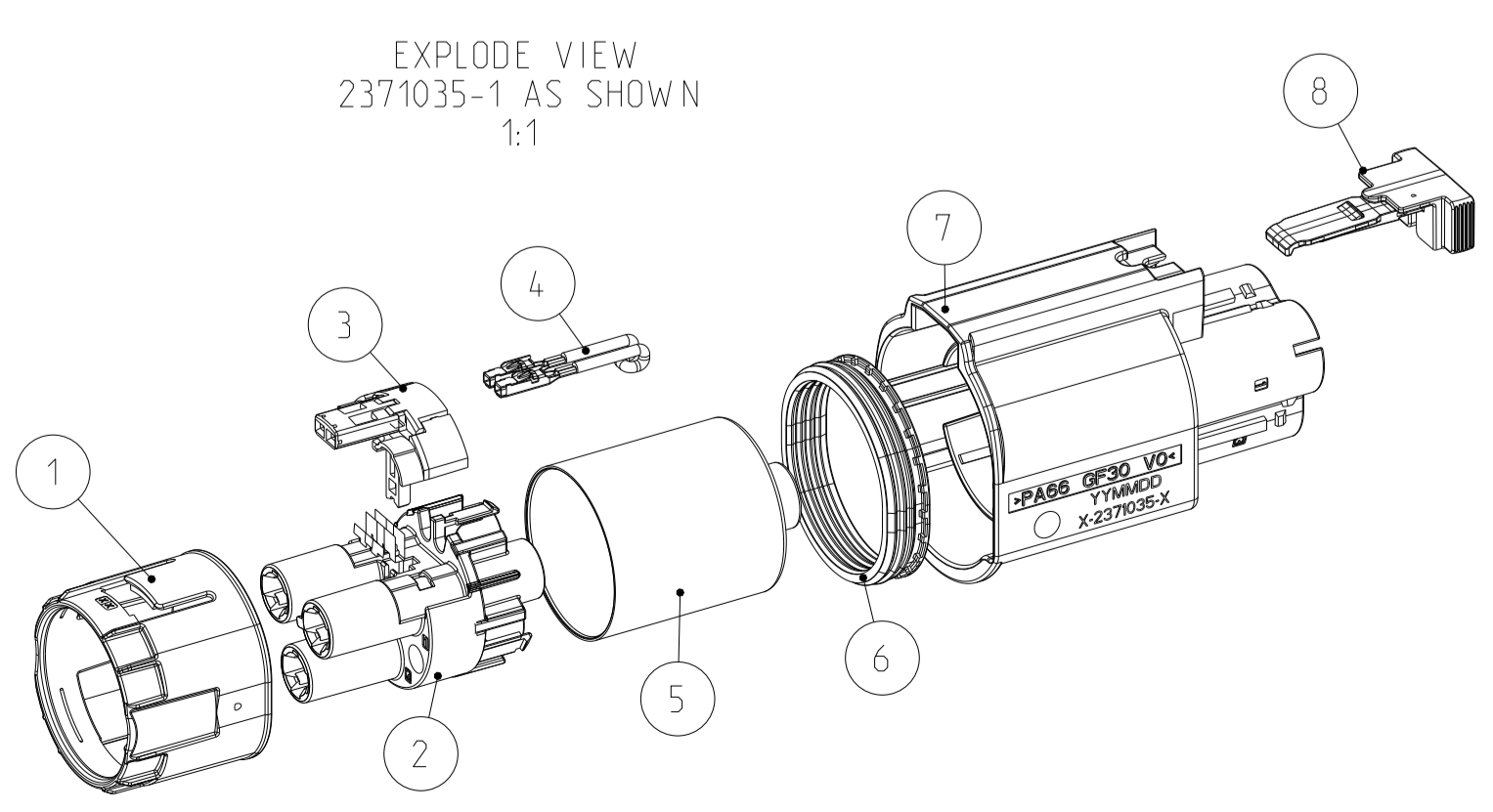
5. GENERAL SPEC:  
 1). WORKING TEMP: -40~140°C  
 2). WORKING VOLTAGE: 1000VDC  
 3). DEGREE OF PROTECTION: IPXXB, IP6K9K, IP67  
 4). INFLAMMABILITY: V0

| Q'TY        | DESCRIPTION           | MATERIAL             | COLOR  | ITEM | BOM OF BLIND PLUG |
|-------------|-----------------------|----------------------|--------|------|-------------------|
| 1           | CPA                   | PA66-GF30 V0         | RED    | 8    |                   |
| 1           | OUTER HOUSING - BLIND | PA66-GF30 V0         | ORANGE | 7    |                   |
| 1           | PERIPHERAL SEAL       | VMQ                  | GREEN  | 6    |                   |
| 1           | SHIELDING - BLIND     | CuSn4 080            | -      | 2    |                   |
| 1           | RETAINER              | PA66-GF30 V0         | NATRAL | 1    |                   |
| -           | ASSEMBLY P/N          |                      |        |      |                   |
| 2-2371035-1 | ←                     |                      |        |      |                   |
| B           | ←                     | REVISION OF ASSEMBLY |        |      |                   |
| Q'TY        | PART LIST             |                      |        |      |                   |

| Q'TY      | DESCRIPTION           | MATERIAL     | COLOR     | ITEM      | BOM OF 3 POSITION |   |                     |
|-----------|-----------------------|--------------|-----------|-----------|-------------------|---|---------------------|
| 1         | CPA                   | PA66-GF30 V0 | RED       | 8         |                   |   |                     |
| 1         | OUTER HOUSING - 3 POS | PA66-GF30 V0 | ORANGE    | 7         |                   |   |                     |
| 1         | PERIPHERAL SEAL       | VMQ          | GREEN     | 6         |                   |   |                     |
| 1         | SHIELDING - 3 POS     | COPPER ALLOY | -         | 5         |                   |   |                     |
| 1         | MCON 1.2 CABLE ASSY   | -            | -         | 4         |                   |   |                     |
| 1         | TPA                   | PA66-GF30 V0 | RED       | 3         |                   |   |                     |
| 1         | INNER HOUSING - 3 POS | PA66-GF30 V0 | BROWN     | 2         |                   |   |                     |
| -         |                       | PA66-GF30 V0 | GREEN     |           |                   |   |                     |
| -         |                       | PA66-GF30 V0 | PURPLE    |           |                   |   |                     |
| -         |                       | PA66-GF30 V0 | BLUE      |           |                   |   |                     |
| -         |                       | PA66-GF30 V0 | WHITE     |           |                   |   |                     |
| 1         | RETAINER              | PA66-GF30 V0 | NATRAL    | 1         |                   |   |                     |
| -         | DESCRIPTION           | MATERIAL     | COLOR     | ITEM      |                   |   |                     |
| F         | E                     | D            | C         | B         | A                 | ← | CODING              |
| 2371035-6 | 2371035-5             | 2371035-4    | 2371035-3 | 2371035-2 | 2371035-1         | ← | ASSEMBLY P/N        |
| A         | A                     | A            | B         | B         | B                 | ← | REVISION OF ASSMBLY |
| PART LIST |                       |              |           |           |                   |   |                     |



| Q'TY        | DESCRIPTION           | MATERIAL     | COLOR       | ITEM        | BOM OF 2 POSITION |   |                      |
|-------------|-----------------------|--------------|-------------|-------------|-------------------|---|----------------------|
| 1           | CPA                   | PA66-GF30 V0 | RED         | 8           |                   |   |                      |
| 1           | OUTER HOUSING - 2 POS | PA66-GF30 V0 | ORANGE      | 7           |                   |   |                      |
| 1           | PERIPHERAL SEAL       | VMQ          | GREEN       | 6           |                   |   |                      |
| 1           | SHIELDING - 2 POS     | COPPER ALLOY | -           | 5           |                   |   |                      |
| 1           | MCON 1.2 CABLE ASSY   | -            | -           | 4           |                   |   |                      |
| 1           | TPA                   | PA66-GF30 V0 | RED         | 3           |                   |   |                      |
| 1           | INNER HOUSING - 2 POS | PA66-GF30 V0 | BROWN       | 2           |                   |   |                      |
| -           |                       | PA66-GF30 V0 | GREEN       |             |                   |   |                      |
| -           |                       | PA66-GF30 V0 | PURPLE      |             |                   |   |                      |
| -           |                       | PA66-GF30 V0 | BLUE        |             |                   |   |                      |
| -           |                       | PA66-GF30 V0 | WHITE       |             |                   |   |                      |
| 1           | RETAINER              | PA66-GF30 V0 | NATRAL      | 1           |                   |   |                      |
| -           | DESCRIPTION           | MATERIAL     | COLOR       | ITEM        |                   |   |                      |
| F           | E                     | D            | C           | B           | A                 | ← | CODING               |
| 1-2371035-6 | 1-2371035-5           | 1-2371035-4  | 1-2371035-3 | 1-2371035-2 | 1-2371035-1       | ← | ASSEMBLY P/N         |
| A           | A                     | B            | B           | B           | B                 | ← | REVISION OF ASSEMBLY |
| PART LIST   |                       |              |             |             |                   |   |                      |



THIS DRAWING IS A CONTROLLED DOCUMENT.

|                       |   |  |  |
|-----------------------|---|--|--|
| DIMENSIONS:<br>mm<br> | TOLERANCES UNLESS OTHERWISE SPECIFIED:<br>0 PLC # # # #<br>1 PLC # # # # ±0.5<br>2 PLC # # # #<br>3 PLC # # # #<br>4 PLC # # # # ±2°<br>ANGLES FINISH | DWN: Y. YANG 06MAY2020<br>CHK: E. JIANG 21MAY2020<br>APVD: L. YIN 21MAY2020<br>PRODUCT SPEC<br>108-160170<br>APPLICATION SPEC<br>116-160093<br>WEIGHT: -<br>CUSTOMER DRAWING | NAME: PLUG ASSEMBLY HD400, 2POS / 3POS CONNECTOR<br>SIZE: A   00779   C=2371035<br>SCALE: 2:1 SHEET 1 OF 1 REV: B2 |
|-----------------------|---|--|--|

# Mouser Electronics

Authorized Distributor

Click to View Pricing, Inventory, Delivery & Lifecycle Information:

[TE Connectivity:](#)

[1-2371035-1](#)