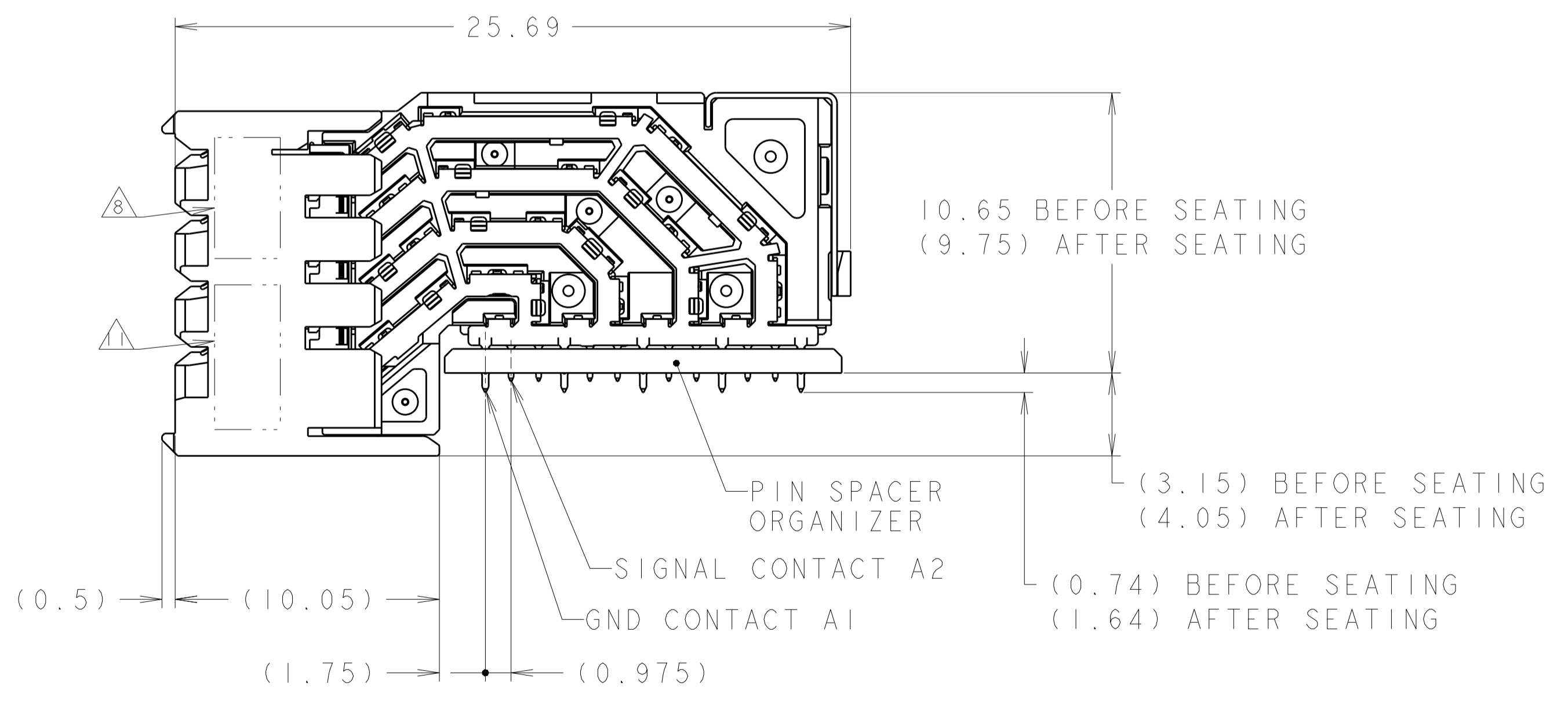
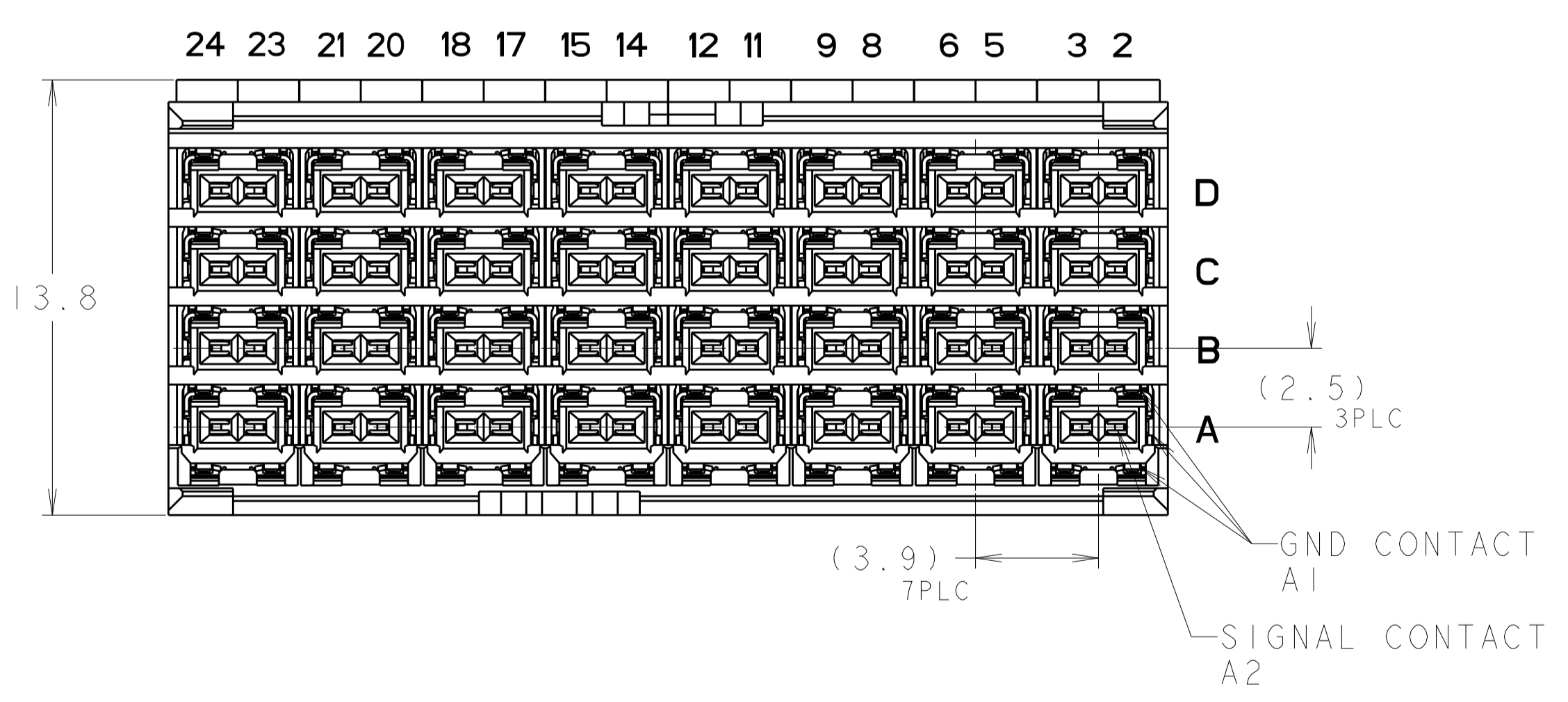
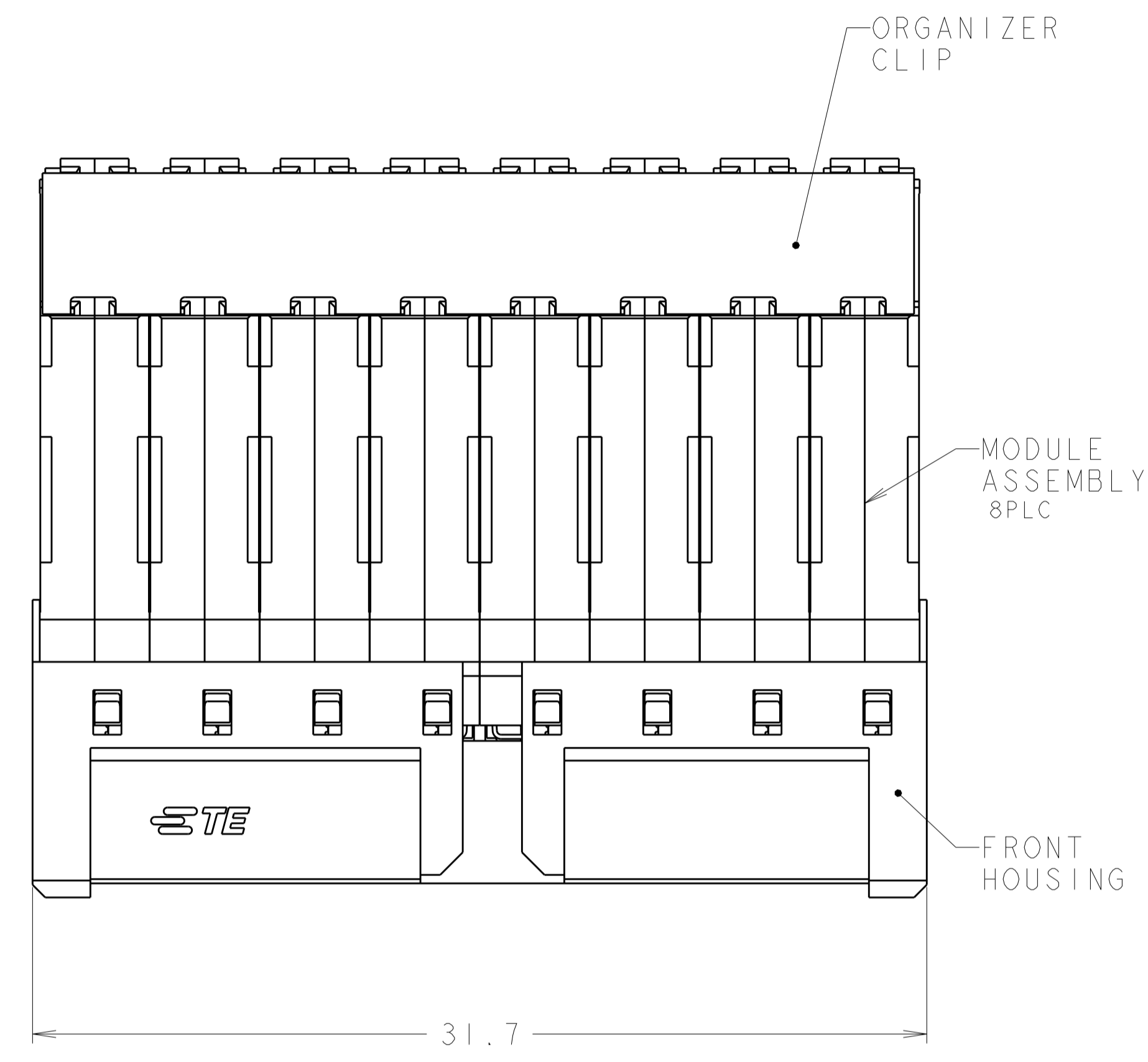


REVISIONS				
P.	LTN	DESCRIPTION	DATE	OWN APVD
A		RELEASED	16DEC2018	Y.K T.M
A1		REVISED	24DEC2019	Y.K T.M

- 1 CONTACTS AND SHIELDS - COPPER ALLOY
 ORGANIZER - STAINLESS STEEL
 HOUSING AND PIN SPACER - THERMOPLASTIC, UL 94V-0, BLACK
- 2 FINISH:
 CONFORMS TO THE REQUIREMENTS OF TE PRODUCT SPECIFICATION 108-140186
 BASED ON TELCORDIA GR-1217-CORE FOR SYSTEM QUALITY LEVEL III,
 APPLICATIONS IN CONTROLLED ENVIRONMENTS (CENTRAL OFFICE).
 COMPLIANT PIN AREA : 0.5um MIN MATTE TIN.
- 3 GROUND PLATED THRU HOLE REQUIREMENTS:
 FINISHED HOLE = $\varnothing 0.37 \pm 0.05$
 HOLE SIZE PRIOR TO PLATING = $\varnothing 0.450 \pm 0.025$
 COPPER THICKNESS = 0.025 MIN
 IMMERSION TIN IF APPLICABLE = (0.00095)
- 4 SIGNAL PLATED THRU HOLE REQUIREMENTS:
 FINISHED HOLE = $\varnothing 0.29 \pm 0.05$
 HOLE SIZE PRIOR TO PLATING = $\varnothing 0.37 \pm 0.025$ (#79 DRILL)
 COPPER THICKNESS = 0.025 MIN
 IMMERSION TIN IF APPLICABLE = (0.00095)
- 5 SI VIA PLATED THRU HOLE REQUIREMENTS:
 FINISHED HOLE = AS REQUIRED
 HOLE SIZE PRIOR TO PLATING = $\varnothing 0.254 \pm 0.025$
 COPPER THICKNESS = 0.025 MIN
 IMMERSION TIN IF APPLICABLE = (0.00095)
- 6 SIGNAL HOLES AND SI VIAS:
 PTH DIMENSIONS APPLY TO THE TOP 1.00mm OF THE PCB THICKNESS FROM THE CONNECTOR MOUNTING SIDE.
 GROUND HOLES:
 PTH DIMENSIONS APPLY TO THE TOP 1.25mm OF THE PCB THICKNESS FROM THE CONNECTOR MOUNTING SIDE.
- 7 CONNECTOR MARKED WITH PART NUMBER, DATE CODE, AND "92 OHM" IN APPROXIMATE AREA SHOWN.
- 8 DATUMS AND BASIC DIMENSIONS ESTABLISHED BY CUSTOMER
- 9 APPLIES TO FINISHED HOLE DIAMETER
- 10 DATAMATRIX BARCODE MARKING IN THIS AREA.

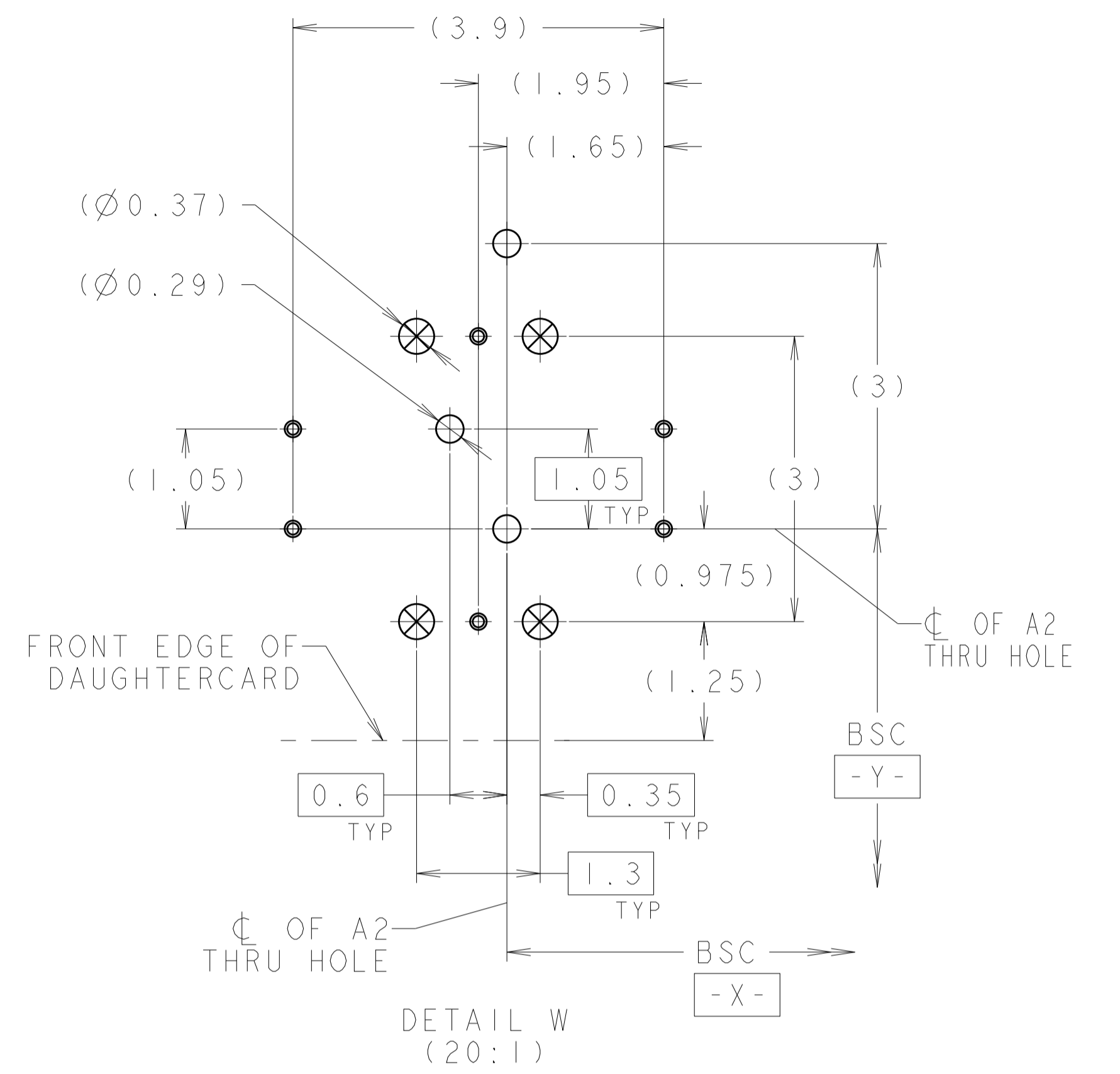
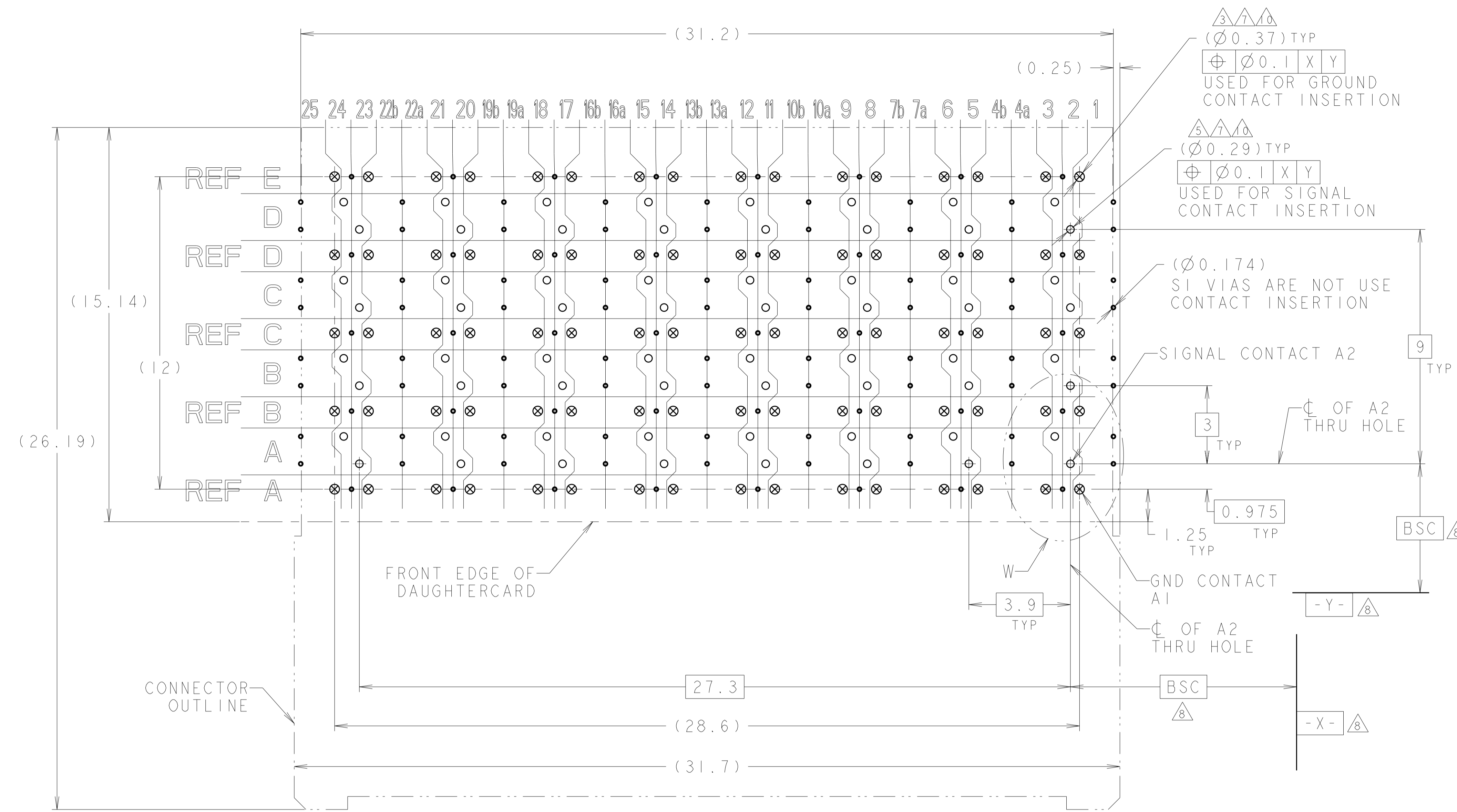


2329739-1
 PART NO

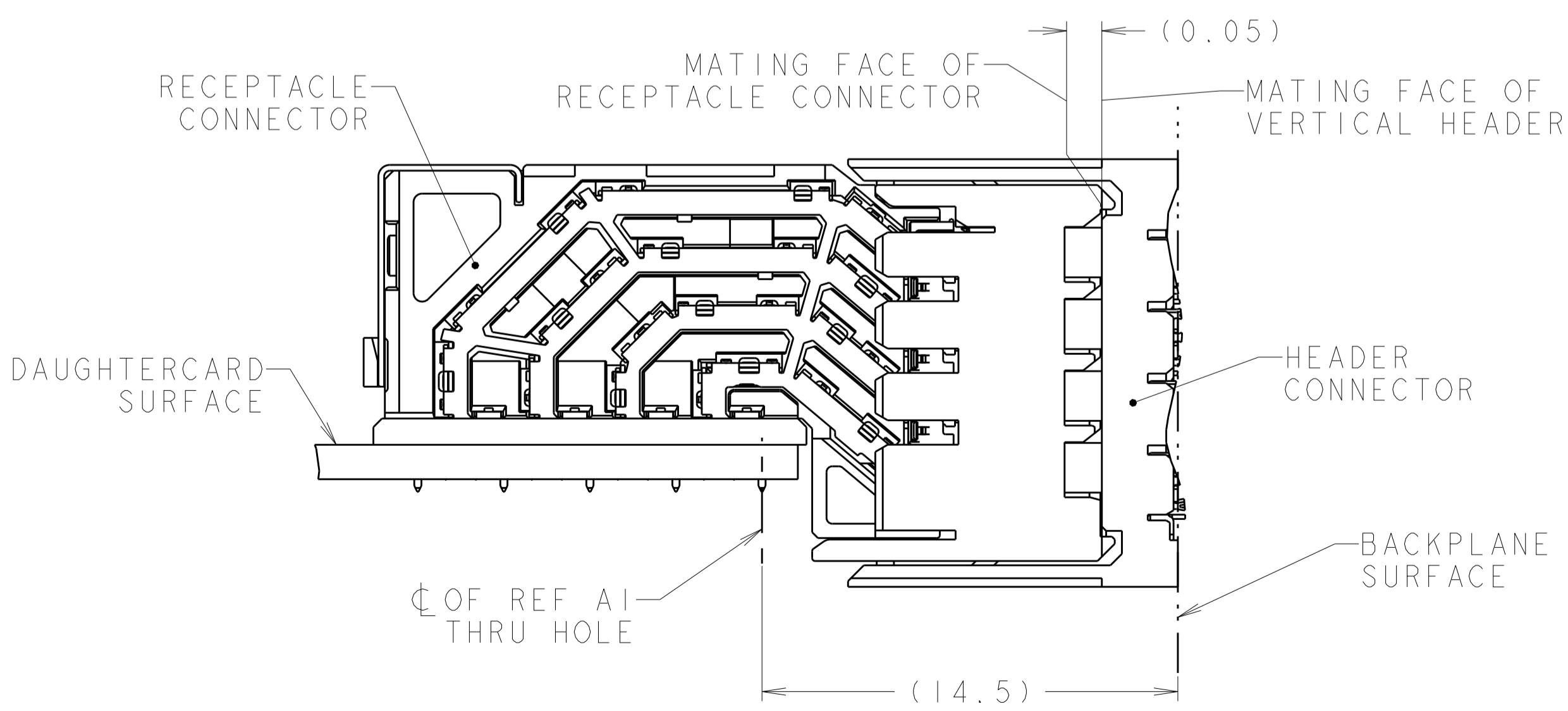
THIS DRAWING IS A CONTROLLED DOCUMENT.		OWN Y. KODAIRA 10JAN2018	NAME RIGHT ANGLE RECEPTACLE ASSEMBLY 4 PAIR 8 COLUMN, 92 OHM, PAIR-IN-ROW, STRADA WHISPER R
DIMENSIONS: mm		CHK M. IWASAKI 10JAN2018	PRODUCT SPEC 108-140186
TOLERANCES UNLESS OTHERWISE SPECIFIED: 0 PLC ± 0.3 1 PLC ± 0.3 2 PLC ± 0.3 3 PLC ± 0.3 4 PLC ± 0.3 ANGLES ± 0.3 FINISH ± 0.3		APVD T. MATSUDAIRA 10JAN2018	APPLICATION SPEC 114-32029
MATERIAL		WEIGHT	SIZE A1
CUSTOMER DRAWING		SCALE 6:1	RESTRICTED TO SHEET 1 OF 2 REV A1

REVISIONS				
REV	DATE	BY	CHK	APVD
1				
2				
3				
4				
5				
6				
7				
8				

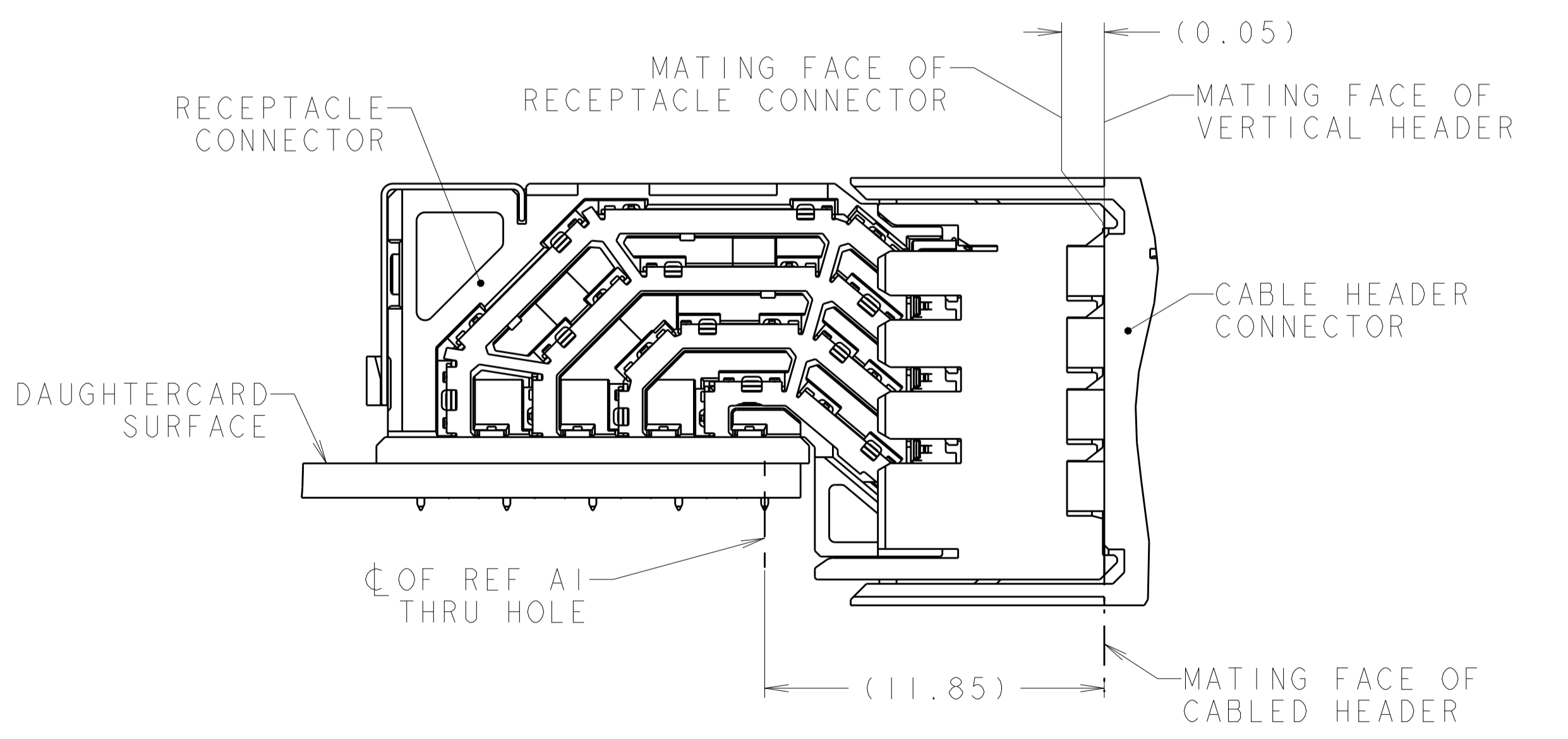
- = SIGNAL
- ⊗ = GROUND
- ⊙ = SIGNAL INTEGRITY VIA TO GROUND



RECOMMENDED PCB LAYOUT
 COMPONENT SIDE SHOWN
 SCALE 10:1



MIDPLANE APPLICATIONS
 MATED ASSEMBLY (PARTIAL VIEW)



CABLED HEADER APPLICATIONS
 MATED ASSEMBLY (PARTIAL VIEW)

THIS DRAWING IS A CONTROLLED DOCUMENT.		DWN	TE Connectivity	
DIMENSIONS: mm		CHK	NAME	
TOLERANCES UNLESS OTHERWISE SPECIFIED:		APVD	RIGHT ANGLE RECEPTACLE ASSEMBLY	
0 PLC	±0.3	PRODUCT SPEC	4 PAIR 8 COLUMN, 92 OHM,	
1 PLC	±0.3	APPLICATION SPEC	PAIR-IN-ROW, STRADA WHISPER R	
2 PLC	±0.3	WEIGHT	SIZE	CAGE CODE
3 PLC	±0.3	CUSTOMER DRAWING	A1	0079
4 PLC	±0.3			
ANGLES	±0.3°			
FINISH	±0.3			
		SCALE	1:1	SHEET 2 OF 2

Mouser Electronics

Authorized Distributor

Click to View Pricing, Inventory, Delivery & Lifecycle Information:

[TE Connectivity:](#)

[2329739-1](#)