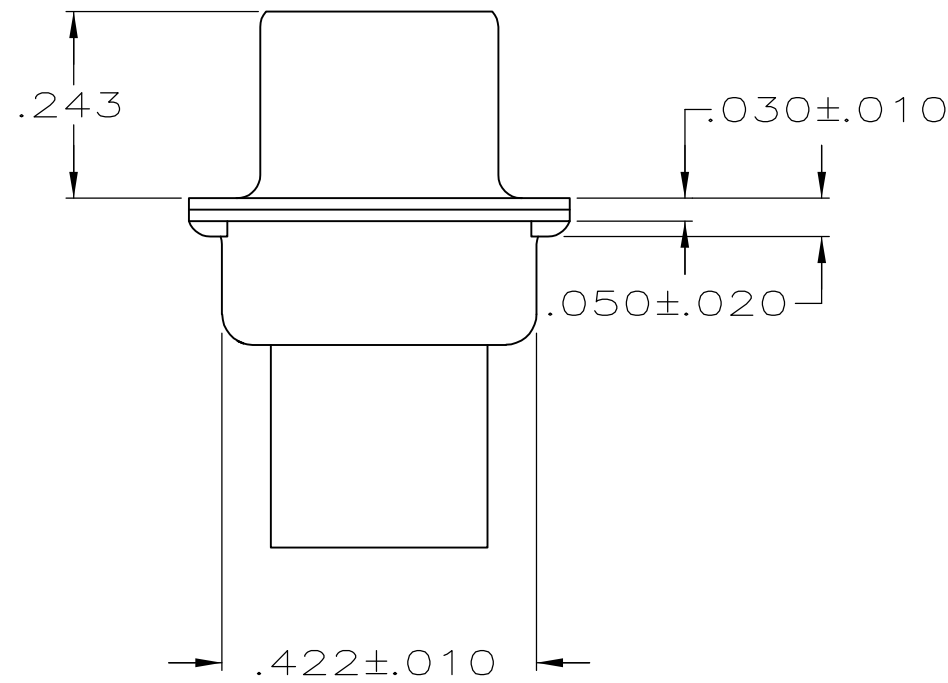
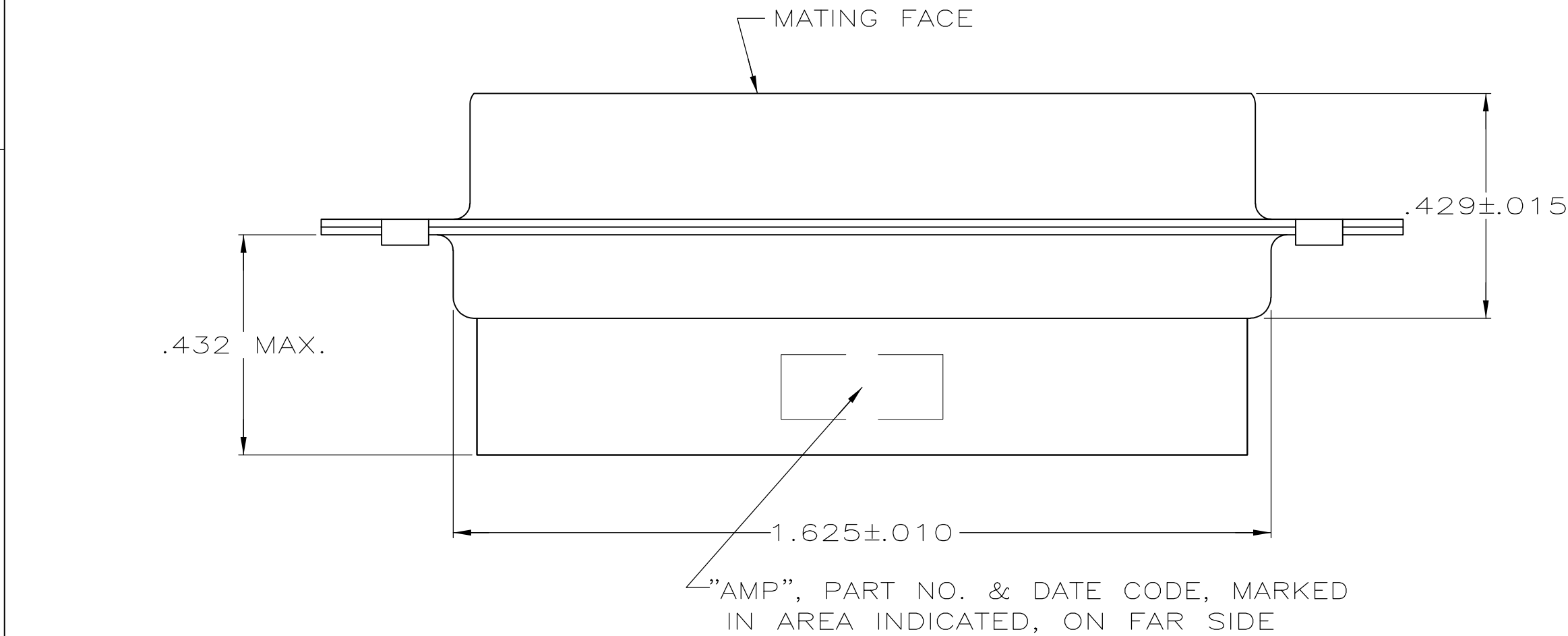
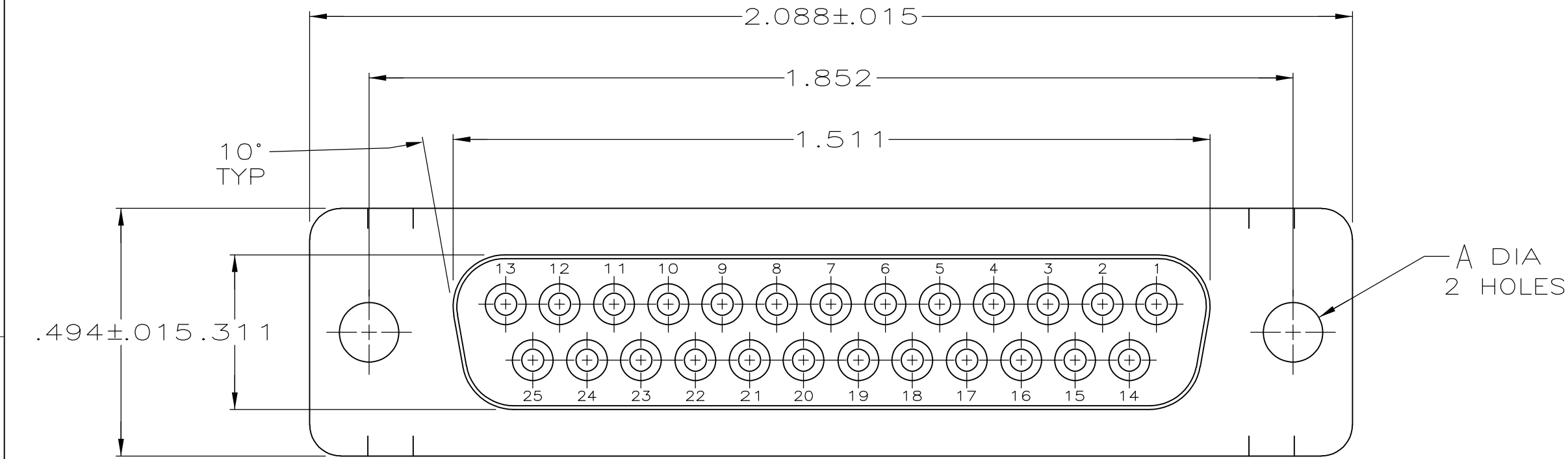


THIS DRAWING IS UNPUBLISHED.

RELEASED FOR PUBLICATION


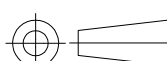


© COPYRIGHT - By - ALL RIGHTS RESERVED.

LOC	DIST	REVISIONS					
		P	LTR	DESCRIPTION	DATE	DWN	APVD
GP	00		E	REVISED PER ECO-14-011808	09AUG2014	AP	SB



- CONNECTOR ACCEPTS SIZE 20 DF SOCKET CONTACTS, RETENTION TINES ARE AN INTEGRAL PART OF INSERT.
- CONNECTOR COMPLIES WITH 108-40005 WHERE APPLICABLE.
- GLASS-FILLED PBT OR GLASS-FILLED NYLON, UL94V-0 RATED. COLOR: BLACK
- STEEL PER ASTM A109.
- TIN OR TIN-LEAD PLATED PER MIL-T-10727.
- TIN PLATED PER MIL-T-10727 OVER COPPER PER MIL-C-14550.

OBSOLETE	SMALL PACK	6	.120	207463-4
OBSOLETE	STANDARD	5	.154	207463-2
	STANDARD	6	.120	207463-1

		PACKAGING TYPE		SHELL FINISH		A		PART NO	
THIS DRAWING IS A CONTROLLED DOCUMENT.				DWN S.WELDON 7-19-85		<div>TE Connectivity</div>			
				CHK J.GERACE 7-29-85					
DIMENSIONS: INCHES		TOLERANCES UNLESS OTHERWISE SPECIFIED:		APVD L.BREKOSKY 7-29-85		NAME  RECEPTACLE CONNECTOR, SIZE 3, 25 POSITION, AMPLIMITE™ HDP			
		0 PLC ± -		PRODUCT SPEC					
		1 PLC ± -		—					
		2 PLC ± -		APPLICATION SPEC					
		3 PLC ± .005		—					
		4 PLC ± -				SIZE		CAGE CODE	
		ANGLES ± .2°				DRAWING NO		RESTRICTED TO	
MATERIAL MOLDED PARTS: 		FINISH		WEIGHT —		A2 00779		C=207463	
SHELLS: 		SHELLS: SEE TABLE		CUSTOMER DRAWING		SCALE 4:1		SHEET 1 of 1	
								REV E	

THIS DRAWING IS A CONTROLLED DOCUMENT FOR AMP INCORPORATED. IT IS SUBJECT TO CHANGE AND THE CONTROLLING ENGINEERING ORGANIZATION SHOULD BE CONTACTED FOR THE LATEST REVISION.

# Mouser Electronics

Authorized Distributor

Click to View Pricing, Inventory, Delivery & Lifecycle Information:

[TE Connectivity:](#)

[207463-1](#)